

CEP128 Rabbit pAb

CEP128 Rabbit pAb

Catalog # AP59213

Product Information

Application	WB
Primary Accession	Q6ZU80
Reactivity	Human
Predicted	Mouse, Rat, Dog, Pig, Horse, Rabbit, Sheep
Host	Rabbit
Clonality	Polyclonal
Calculated MW	128015
Physical State	Liquid
Immunogen	KLH conjugated synthetic peptide derived from human CEP128
Epitope Specificity	801-900/1094
Isotype	IgG
Purity	affinity purified by Protein A
Buffer	0.01M TBS (pH7.4) with 1% BSA, 0.02% Proclin300 and 50% Glycerol.
SUBCELLULAR LOCATION	Cytoplasm, cytoskeleton, centrosome, centriole. Cytoplasm, cytoskeleton, spindle pole. Note=Associates with the mother centriole.
Important Note	This product as supplied is intended for research use only, not for use in human, therapeutic or diagnostic applications.
Background Descriptions	Phosphorylated upon DNA damage, probably by ATM or ATR.

Additional Information

Gene ID	145508
Other Names	Centrosomal protein of 128 kDa, Cep128, CEP128, C14orf145, C14orf61
Dilution	WB=1:500-2000
Storage	Store at -20 °C for one year. Avoid repeated freeze/thaw cycles. When reconstituted in sterile pH 7.4 0.01M PBS or diluent of antibody the antibody is stable for at least two weeks at 2-4 °C.

Protein Information

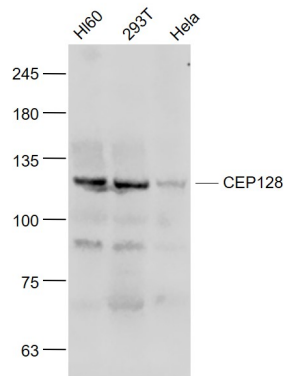
Name	CEP128
Synonyms	C14orf145, C14orf61
Cellular Location	Cytoplasm, cytoskeleton, microtubule organizing center, centrosome. Cytoplasm, cytoskeleton, microtubule organizing center, centrosome,

centriole. Cytoplasm, cytoskeleton, spindle pole. Note=Associates with the mother centriole

Background

Phosphorylated upon DNA damage, probably by ATM or ATR.

Images



Sample:

HL60 (Human) Cell Lysate at 30 ug

293T(Human) Cell Lysate at 30 ug

HeLa (Human) Cell Lysate at 30 ug

Primary: Anti- CEP128 (AP59213) at 1/1000 dilution

Secondary: IRDye800CW Goat Anti-Rabbit IgG at 1/20000 dilution

Predicted band size: 128 kD

Observed band size: 128 kD

Please note: All products are 'FOR RESEARCH USE ONLY. NOT FOR USE IN DIAGNOSTIC OR THERAPEUTIC PROCEDURES'.