

ASZ1 Rabbit pAb

ASZ1 Rabbit pAb
Catalog # AP59221

Product Information

Application	WB
Primary Accession	Q8WWH4
Reactivity	Mouse
Predicted	Human, Rat, Horse
Host	Rabbit
Clonality	Polyclonal
Calculated MW	53458
Physical State	Liquid
Immunogen	KLH conjugated synthetic peptide derived from human ASZ1
Epitope Specificity	151-250/475
Isotype	IgG
Purity	affinity purified by Protein A
Buffer	0.01M TBS (pH7.4) with 1% BSA, 0.02% Proclin300 and 50% Glycerol.
SUBCELLULAR LOCATION	Cytoplasm (By similarity). Note=Component of the meiotic nuage, also named P granule, a germ-cell-specific organelle required to repress transposon during meiosis. Specifically localizes to pi-bodies, a subset of the nuage which contains primary piRNAs (By similarity).
SIMILARITY	Contains 6 ANK repeats. Contains 1 SAM (sterile alpha motif) domain.
SUBUNIT	Interacts with DDX4, PIWIL1, RANBP9 and TDRD1 (By similarity).
Important Note	This product as supplied is intended for research use only, not for use in human, therapeutic or diagnostic applications.
Background Descriptions	ASZ1 (ankyrin repeat, SAM and basic leucine zipper domain-containing protein 1), also known as ANKL1, ALP1 (Ankyrin-like protein 1), GASZ (germ cell-specific ankyrin, SAM and basic leucine zipper domain-containing protein) or Orf3, is a 475 amino acid protein that is suggested to function as a signal transducer during germ cell maturation. Localized to the cytoplasm of pachytene spermatocytes, early spermatids and oocytes, ASZ1 is primarily found in adult testis and ovary where it mediates protein-protein interactions. ASZ1 contains six ANK repeats, one SAM (sterile alpha motif) domain and is encoded by a gene located on human chromosome 7q31, a region that may have an important role in the development certain types of human cancer.

Additional Information

Gene ID	136991
Other Names	Ankyrin repeat, SAM and basic leucine zipper domain-containing protein 1, Ankyrin-like protein 1, Germ cell-specific ankyrin, SAM and basic leucine zipper domain-containing protein, ASZ1 (HGNC:1350)
Target/Specificity	Expressed exclusively in the testis and ovary and at higher levels in the adult

testis compared with the adult ovary.

Dilution	WB=1:500-2000
Storage	Store at -20 °C for one year. Avoid repeated freeze/thaw cycles. When reconstituted in sterile pH 7.4 0.01M PBS or diluent of antibody the antibody is stable for at least two weeks at 2-4 °C.

Protein Information

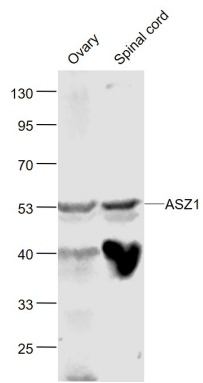
Name	ASZ1 (HGNC:1350)
Function	Plays a central role during spermatogenesis by repressing transposable elements and preventing their mobilization, which is essential for the germline integrity. Acts via the piRNA metabolic process, which mediates the repression of transposable elements during meiosis by forming complexes composed of piRNAs and Piwi proteins and governs the methylation and subsequent repression of transposons. Its association with pi-bodies suggests a participation in the primary piRNAs metabolic process. Required prior to the pachytene stage to facilitate the production of multiple types of piRNAs, including those associated with repeats involved in the regulation of retrotransposons. May act by mediating protein-protein interactions during germ cell maturation (By similarity).
Cellular Location	Cytoplasm. Note=Component of the meiotic nuage, also named P granule, a germ-cell-specific organelle required to repress transposon activity during meiosis. Specifically localizes to pi-bodies, a subset of the nuage which contains primary piRNAs (By similarity).
Tissue Location	Expressed exclusively in the testis and ovary and at higher levels in the adult testis compared with the adult ovary

Background

ASZ1 (ankyrin repeat, SAM and basic leucine zipper domain-containing protein 1), also known as ANKL1, ALP1 (Ankyrin-like protein 1), GASZ (germ cell-specific ankyrin, SAM and basic leucine zipper domain-containing protein) or Orf3, is a 475 amino acid protein that is suggested to function as a signal transducer during germ cell maturation. Localized to the cytoplasm of pachytene spermatocytes, early spermatids and oocytes, ASZ1 is primarily found in adult testis and ovary where it mediates protein-protein interactions. ASZ1 contains six ANK repeats, one SAM (sterile alpha motif) domain and is encoded by a gene located on human chromosome 7q31, a region that may have an important role in the development certain types of human cancer.

Images

Sample:
Ovary(Mouse) Lysate at 40 ug
Spinal cord(Mouse) Lysate at 40 ug
Primary: Anti-ASZ1 (AP59221) at 1/1000 dilution
Secondary: IRDye800CW Goat Anti-Rabbit IgG at 1/20000 dilution
Predicted band size: 53 kD
Observed band size: 53 kD



Please note: All products are 'FOR RESEARCH USE ONLY. NOT FOR USE IN DIAGNOSTIC OR THERAPEUTIC PROCEDURES'.