

LRCH2 Polyclonal Antibody

Purified Rabbit Polyclonal Antibody (Pab)

Catalog # AP59223

Product Information

| | |
|--------------------------|------------------------|
| Application | IHC-F, IF |
| Primary Accession | Q5VUJ6 |
| Reactivity | Rat, Dog, Bovine |
| Host | Rabbit |
| Clonality | Polyclonal |
| Calculated MW | 84588 |

Additional Information

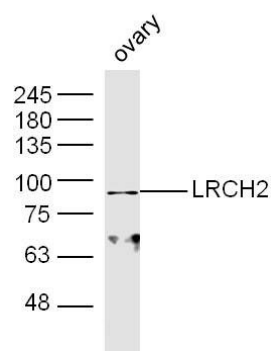
| | |
|--------------------|---|
| Gene ID | 57631 |
| Other Names | Leucine-rich repeat and calponin homology domain-containing protein 2, LRCH2, KIAA1495 |
| Dilution | IHC-F=1:100-500,IF=1:50-200 |
| Format | 0.01M TBS(pH7.4) with 1% BSA, 0.09% (W/V) sodium azide and 50% Glycerol |
| Storage | Store at -20 °C for one year. Avoid repeated freeze/thaw cycles. When reconstituted in sterile pH 7.4 0.01M PBS or diluent of antibody the antibody is stable for at least two weeks at 2-4 °C. |

Protein Information

| | |
|-----------------|--|
| Name | LRCH2 |
| Synonyms | KIAA1495 |
| Function | May play a role in the organization of the cytoskeleton. |

Images

Sample: Ovary (Mouse) Lysate at 40 ug
Primary: Anti-LRCH2 (AP59223) at 1/300 dilution
Secondary: IRDye800CW Goat Anti-Rabbit IgG at 1/20000 dilution
Predicted band size: 85 kD
Observed band size: 85 kD



Please note: All products are 'FOR RESEARCH USE ONLY. NOT FOR USE IN DIAGNOSTIC OR THERAPEUTIC PROCEDURES'.