

NHLRC2 Polyclonal Antibody

Purified Rabbit Polyclonal Antibody (Pab)

Catalog # AP59226

Product Information

Application	IHC-P, IHC-F, IF, E
Primary Accession	Q8NBF2
Reactivity	Rat, Pig, Bovine
Host	Rabbit
Clonality	Polyclonal
Calculated MW	79444
Physical State	Liquid
Immunogen	KLH conjugated synthetic peptide derived from human NHLRC2
Epitope Specificity	151-250/726
Isotype	IgG
Purity	affinity purified by Protein A
Buffer	0.01M TBS (pH7.4) with 1% BSA, 0.02% Proclin300 and 50% Glycerol.
SIMILARITY	Contains 6 NHL repeats. Contains 1 thioredoxin domain.
Important Note	This product as supplied is intended for research use only, not for use in human, therapeutic or diagnostic applications.
Background Descriptions	NHLRC2 (NHL repeat containing 2) is a 726 amino acid protein that contains six NHL repeats and one thioredoxin domain. Existing as two alternatively spliced isoforms, NHLRC2 is encoded by a gene that maps to human chromosome 10q25.3. Spanning nearly 135 million base pairs, chromosome 10 makes up approximately 4.5% of total DNA in cells and encodes nearly 1,200 genes. Several protein-coding genes, including those that encode for chemokines, cadherins, excision repair proteins, early growth response factors (Egrs) and fibroblast growth receptors (FGFRs), are located on chromosome 10. Defects in some of the genes that map to chromosome 10 are associated with Charcot-Marie Tooth disease, Jackson-Weiss syndrome, Usher syndrome, nonsyndromic deafness, Wolman's syndrome, Cowden syndrome, multiple endocrine neoplasia type 2 and porphyria.

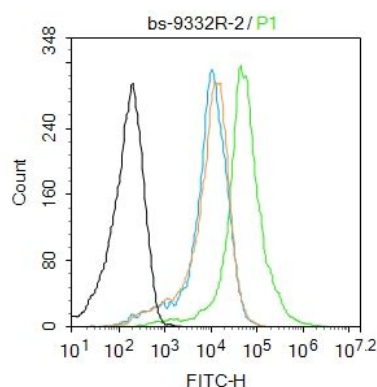
Additional Information

Gene ID	374354
Other Names	NHL repeat-containing protein 2, NHLRC2
Dilution	IHC-P=1:100-500,IHC-F=1:100-500,IF=1:200-800,ELISA=1:5000-10000
Format	0.01M TBS(pH7.4) with 1% BSA, 0.09% (W/V) sodium azide and 50% Glyce
Storage	Store at -20 °C for one year. Avoid repeated freeze/thaw cycles. When reconstituted in sterile pH 7.4 0.01M PBS or diluent of antibody the antibody is stable for at least two weeks at 2-4 °C.

Protein Information

Name	NHLRC2
Function	Required for normal embryonic development.
Cellular Location	Cytoplasm, cytosol.
Tissue Location	Ubiquitous. Detected in heart, kidney, muscle, brain, lung, liver and in skin fibroblasts (at protein level)

Images



Blank control: Mouse spleen.

Primary Antibody (green line): Rabbit Anti-NHLRC2 antibody (AP59226)

Dilution: 2 µg /10⁶ cells;

Isotype Control Antibody (orange line): Rabbit IgG .

Secondary Antibody : Goat anti-rabbit IgG-AF488

Dilution: 1 µg /test.

Protocol

The cells were fixed with 70% ethanol (10min at room temperature) and then were incubated in 5%BSA to block non-specific protein-protein interactions for 30 min at room temperature .Cells stained with Primary Antibody for 30 min at room temperature. The secondary antibody used for 40 min at room temperature. Acquisition of 20,000 events was performed.

Please note: All products are 'FOR RESEARCH USE ONLY. NOT FOR USE IN DIAGNOSTIC OR THERAPEUTIC PROCEDURES'.