

PRR15 Polyclonal Antibody

Purified Rabbit Polyclonal Antibody (Pab)

Catalog # AP59248

Product Information

| | |
|--------------------------------|---|
| Application | IHC-P, IHC-F, IF, ICC, E |
| Primary Accession | Q8IV56 |
| Reactivity | Rat, Pig, Dog, Bovine |
| Host | Rabbit |
| Clonality | Polyclonal |
| Calculated MW | 13715 |
| Physical State | Liquid |
| Immunogen | KLH conjugated synthetic peptide derived from human PRR15 |
| Epitope Specificity | 41-129/129 |
| Isotype | IgG |
| Purity | affinity purified by Protein A |
| Buffer | 0.01M TBS (pH7.4) with 1% BSA, 0.02% Proclin300 and 50% Glycerol. |
| SIMILARITY | Belongs to the PRR15 family. |
| Important Note | This product as supplied is intended for research use only, not for use in human, therapeutic or diagnostic applications. |
| Background Descriptions | May have a role in proliferation and/or differentiation. |

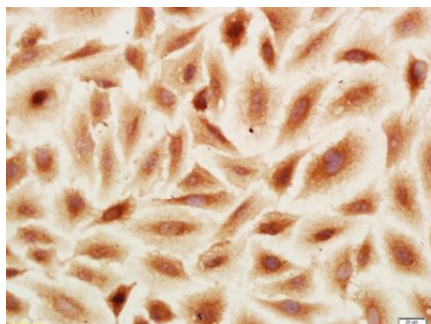
Additional Information

| | |
|--------------------|---|
| Gene ID | 222171 |
| Other Names | Proline-rich protein 15, PRR15 |
| Dilution | IHC-P=1:100-500,IHC-F=1:100-500,ICC=1:100-500,IF=1:50-200,ELISA=1:5000-10000 |
| Format | 0.01M TBS(pH7.4) with 1% BSA, 0.09% (W/V) sodium azide and 50% Glyce |
| Storage | Store at -20 °C for one year. Avoid repeated freeze/thaw cycles. When reconstituted in sterile pH 7.4 0.01M PBS or diluent of antibody the antibody is stable for at least two weeks at 2-4 °C. |

Protein Information

| | |
|-----------------|--|
| Name | PRR15 |
| Function | May have a role in proliferation and/or differentiation. |

Images



Tissue/cell: A549 cell; 4% Paraformaldehyde-fixed; Triton X-100 at room temperature for 20 min; Block endogenous peroxidase by 3% hydrogen peroxide for 20 minutes; Blocking buffer (normal goat serum) at 37°C for 30min; Antibody incubation with (PRR15) Polyclonal Antibody, Unconjugated (AP59248) 1:100, 90 minutes at 37°C, followed by operating according to SP Kit(Rabbit) (sp-0023) instructions and DAB staining.

Please note: All products are 'FOR RESEARCH USE ONLY. NOT FOR USE IN DIAGNOSTIC OR THERAPEUTIC PROCEDURES'.