

GERP Polyclonal Antibody

Purified Rabbit Polyclonal Antibody (Pab)

Catalog # AP59255

Product Information

Application	WB, IHC-P, IHC-F, IF, E
Primary Accession	Q9BZR9
Reactivity	Rat, Dog
Host	Rabbit
Clonality	Polyclonal
Calculated MW	61489
Physical State	Liquid
Immunogen	KLH conjugated synthetic peptide derived from human GERP/TRIM8/RNF27
Epitope Specificity	61-160/551
Isotype	IgG
Purity	affinity purified by Protein A
Buffer	0.01M TBS (pH7.4) with 1% BSA, 0.02% Proclin300 and 50% Glycerol.
SIMILARITY	Belongs to the TRIM/RBCC family. Contains 2 B box-type zinc fingers. Contains 1 RING-type zinc finger.
SUBUNIT	Homodimer. Interacts with SOCS1 (via) SH2 domain and SOCS box.
Important Note	This product as supplied is intended for research use only, not for use in human, therapeutic or diagnostic applications.
Background Descriptions	The tripartite motif (TRIM) family of proteins are characterized by a conserved TRIM domain that includes a coiled-coil region, a B-box type zinc finger, one RING finger and three zinc-binding domains. TRIM8 (tripartite motif containing 8), also known as GERP (glioblastoma-expressed RING finger protein) or RNF27 (RING finger protein 27), is a 551 amino acid protein that is thought to function as an E3 ubiquitin-protein ligase that promotes SOCS-1 proteasomal degradation. As a widely expressed homodimer, TRIM8 localizes to nuclear bodies and contains two B box-type zinc fingers and one RING-type zinc finger. TRIM8 is expressed in lung, heart, brain and skeletal muscle, with low levels detected in intestine, placenta, leukocytes and liver. The gene encoding TRIM8 maps to human chromosome 10q24.32.

Additional Information

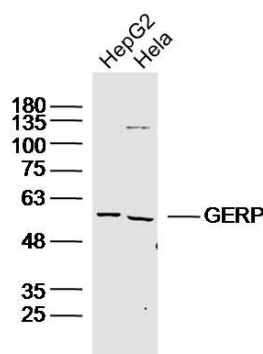
Gene ID	81603
Other Names	E3 ubiquitin-protein ligase TRIM8, 2.3.2.27, Glioblastoma-expressed RING finger protein, RING finger protein 27, RING-type E3 ubiquitin transferase TRIM8, Tripartite motif-containing protein 8, TRIM8, GERP, RNF27
Target/Specificity	Widely expressed.
Dilution	WB=1:500-2000,IHC-P=1:100-500,IHC-F=1:100-500,IF=1:50-200,ELISA=1:5000-10000

Format	0.01M TBS(pH7.4) with 1% BSA, 0.09% (W/V) sodium azide and 50% Glyce
Storage	Store at -20 °C for one year. Avoid repeated freeze/thaw cycles. When reconstituted in sterile pH 7.4 0.01M PBS or diluent of antibody the antibody is stable for at least two weeks at 2-4 °C.

Protein Information

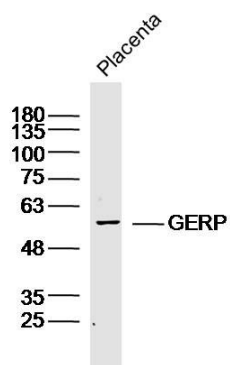
Name	TRIM8
Synonyms	GERP, RNF27
Function	E3 ubiquitin-protein ligase that participates in multiple biological processes including cell survival, differentiation, apoptosis, and in particular, the innate immune response (PubMed: 27981609 , PubMed: 28747347). Participates in the activation of interferon-gamma signaling by promoting proteasomal degradation of the repressor SOCS1 (PubMed: 12163497). Plays a positive role in the TNFalpha and IL-1beta signaling pathways. Mechanistically, induces the 'Lys-63'-linked polyubiquitination of MAP3K7/TAK1 component leading to the activation of NF-kappa-B (PubMed: 22084099 , PubMed: 23152791 , PubMed: 27981609 , PubMed: 34871740). Also modulates STAT3 activity through negative regulation of PIAS3, either by degradation of PIAS3 through the ubiquitin-proteasome pathway or exclusion of PIAS3 from the nucleus (PubMed: 20516148). Negatively regulates TLR3/4-mediated innate immune response by catalyzing 'Lys-6'- and 'Lys-33'-linked polyubiquitination of TICAM1 and thereby disrupting the TICAM1-TBK1 interaction (PubMed: 28747347).
Cellular Location	Cytoplasm. Nucleus. Nucleus, nuclear body. Note=Nucleo-cytoplasmic translocation is involved in regulation of NF-kappa-B.
Tissue Location	Widely expressed. Expressed in glomerular podocytes of kidneys. {ECO:0000269 PubMed:33508234, ECO:0000305}

Images



Sample:
HepG2 Cell (Human) Lysate at 30 ug
Hela Cell(Human)Lysate at 30 ug
Primary: Anti- GERP (AP59255)at 1/300 dilution
Secondary: IRDye800CW Goat Anti-Rabbit IgG at 1/20000 dilution
Predicted band size: 61kD
Observed band size: 61kD

Sample:
Placenta (Mouse) Lysate at 40 ug
Primary: Anti- GERP (AP59255)at 1/300 dilution
Secondary: IRDye800CW Goat Anti-Rabbit IgG at 1/20000 dilution
Predicted band size: 61kD
Observed band size: 61kD



Please note: All products are 'FOR RESEARCH USE ONLY. NOT FOR USE IN DIAGNOSTIC OR THERAPEUTIC PROCEDURES'.