

C14ORF140 Polyclonal Antibody

Purified Rabbit Polyclonal Antibody (Pab)

Catalog # AP59307

Product Information

Application	WB, IHC-P, IHC-F, IF, ICC, E
Primary Accession	Q53FD0
Reactivity	Rat, Pig, Dog, Bovine
Host	Rabbit
Clonality	Polyclonal
Calculated MW	51658
Physical State	Liquid
Immunogen	KLH conjugated synthetic peptide derived from human C14ORF140/FAM164C
Epitope Specificity	871-456/456
Isotype	IgG
Purity	affinity purified by Protein A
Buffer	0.01M TBS (pH7.4) with 1% BSA, 0.02% Proclin300 and 50% Glycerol.
SIMILARITY	Belongs to the ZC2HC1 family. Contains 1 C2HC-type zinc finger.
Important Note	This product as supplied is intended for research use only, not for use in human, therapeutic or diagnostic applications.
Background Descriptions	Chromosome 14 contains about 700 genes and 106 million base pairs and makes up about 3.5% of human cellular DNA. Chromosome 14 encodes the presenilin 1 (PSEN1) gene, which is one of the three key genes associated with the development of Alzheimer's disease. The SERPINA1 gene is located on chromosome 14 and when defective leads to the genetic disorder α -antitrypsin deficiency. This disorder is characterized by severe lung complications and liver dysfunction. Notably, the immunoglobulin heavy chain locus is found on chromosome 14 and has been identified as a fusion with the chromosome 19 encoded protein BCL3 in the (14;19) translocations found in a variety of B cell malignancies. The C14orf140 gene product has been provisionally designated C14orf140 pending further characterization.

Additional Information

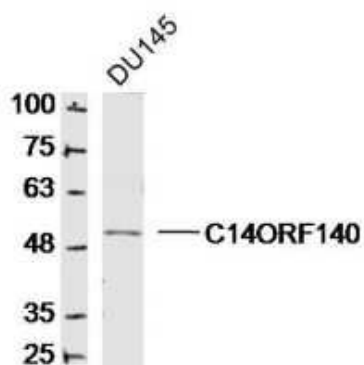
Gene ID	79696
Other Names	Zinc finger C2HC domain-containing protein 1C, ZC2HC1C, C14orf140, FAM164C
Dilution	WB=1:500-2000, IHC-P=1:100-500, IHC-F=1:100-500, ICC=1:100-500, IF=1:100-500, ELISA=1:5000-10000
Format	0.01M TBS(pH7.4) with 1% BSA, 0.09% (W/V) sodium azide and 50% Glyce
Storage	Store at -20 °C for one year. Avoid repeated freeze/thaw cycles. When reconstituted in sterile pH 7.4 0.01M PBS or diluent of antibody the antibody

is stable for at least two weeks at 2-4 °C.

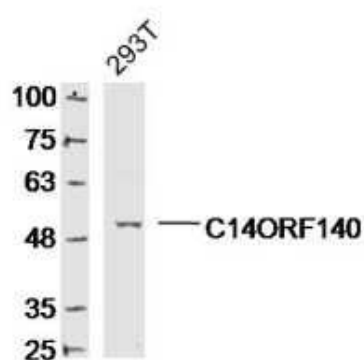
Protein Information

Name	ZC2HC1C
Synonyms	C14orf140, FAM164C

Images



Sample:
DU145 Cell(Human)Lysate at 30 ug
Primary: Anti- C14ORF140 (AP59307)at 1/300 dilution
Secondary: IRDye800CW Goat Anti-Rabbit IgG at 1/20000 dilution
Predicted band size: 52kD
Observed band size: 52kD



Sample:
293T Cell (Human) Lysate at 30 ug
Primary: Anti- C14ORF140 (AP59307)at 1/300 dilution
Secondary: IRDye800CW Goat Anti-Rabbit IgG at 1/20000 dilution
Predicted band size: 52kD
Observed band size: 52kD

Please note: All products are 'FOR RESEARCH USE ONLY. NOT FOR USE IN DIAGNOSTIC OR THERAPEUTIC PROCEDURES'.