

## RCL Antibody (N-term)

Affinity Purified Rabbit Polyclonal Antibody (Pab)

Catalog # AP5930a

### Product Information

---

Application	WB, FC, E
Primary Accession	<a href="#">O43598</a>
Other Accession	<a href="#">NP_006434.1</a> , <a href="#">NP_954653.1</a>
Reactivity	Human
Host	Rabbit
Clonality	Polyclonal
Isotype	Rabbit IgG
Clone Names	RB27040
Calculated MW	19108
Antigen Region	20-48

### Additional Information

---

Gene ID	10591
Other Names	2'-deoxynucleoside 5'-phosphate N-hydrolase 1 {ECO:0000255 HAMAP-Rule:MF_03036}, 322- {ECO:0000255 HAMAP-Rule:MF_03036, ECO:0000269 PubMed:24260472, ECO:0000269 PubMed:25108359}, c-Myc-responsive protein RCL {ECO:0000255 HAMAP-Rule:MF_03036}, DNPH1 {ECO:0000255 HAMAP-Rule:MF_03036}
Target/Specificity	This RCL antibody is generated from rabbits immunized with a KLH conjugated synthetic peptide between 20-48 amino acids from the N-terminal region of human RCL.
Dilution	WB~~1:1000 FC~~1:10~50 E~~Use at an assay dependent concentration.
Format	Purified polyclonal antibody supplied in PBS with 0.09% (W/V) sodium azide. This antibody is purified through a protein A column, followed by peptide affinity purification.
Storage	Maintain refrigerated at 2-8°C for up to 2 weeks. For long term storage store at -20°C in small aliquots to prevent freeze-thaw cycles.
Precautions	RCL Antibody (N-term) is for research use only and not for use in diagnostic or therapeutic procedures.

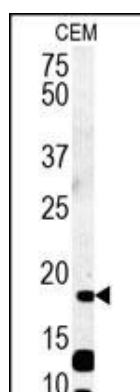
### Protein Information

---

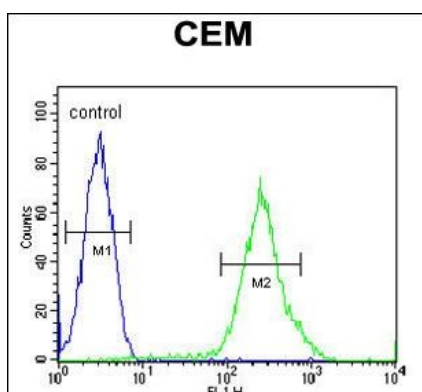
Name	DNPH1 ( <a href="#">HGNC:21218</a> )
------	--------------------------------------

<b>Function</b>	Part of a nucleotide salvage pathway that eliminates epigenetically modified 5-hydroxymethyl-dCMP (hmdCMP) in a two-step process entailing deamination to cytotoxic 5-hydroxymethyl-dUMP (hmdUMP), followed by its hydrolysis into 5-hydroxymethyluracil (hmU) and 2-deoxy-D-ribose 5-phosphate (deoxyribosephosphate) (PubMed: <a href="#">33833118</a> ). Catalyzes the second step in that pathway, the hydrolysis of the N-glycosidic bond in hmdUMP, degrading this cytotoxic nucleotide to avoid its genomic integration (PubMed: <a href="#">33833118</a> ).
<b>Cellular Location</b>	Cytoplasm. Nucleus
<b>Tissue Location</b>	Expressed at low levels in brain, colon, lung, peripheral blood leukocytes, placenta, small intestine, and thymus Expressed at high levels in heart, kidney, liver, skeletal muscle and spleen. Overexpressed in a significant proportion of breast cancers

## Images



RCL Antibody (N-term) (Cat. #AP5930a) western blot analysis in CEM cell line lysates (35ug/lane). This demonstrates the RCL antibody detected the RCL protein (arrow).



RCL Antibody (N-term) (Cat. #AP5930a) flow cytometric analysis of CEM cells (right histogram) compared to a negative control cell (left histogram). FITC-conjugated goat-anti-rabbit secondary antibodies were used for the analysis.

Please note: All products are 'FOR RESEARCH USE ONLY. NOT FOR USE IN DIAGNOSTIC OR THERAPEUTIC PROCEDURES'.