

KLHL36 Polyclonal Antibody

Purified Rabbit Polyclonal Antibody (Pab)

Catalog # AP59313

Product Information

Application	WB, IHC-P, IHC-F, IF, ICC, E
Primary Accession	Q8N4N3
Reactivity	Rat, Dog, Bovine
Host	Rabbit
Clonality	Polyclonal
Calculated MW	69896
Physical State	Liquid
Immunogen	KLH conjugated synthetic peptide derived from human KLHL36/C16orf44
Epitope Specificity	51-150/616
Isotype	IgG
Purity	affinity purified by Protein A
Buffer	0.01M TBS (pH7.4) with 1% BSA, 0.02% Proclin300 and 50% Glycerol.
SIMILARITY	Contains 1 BACK (BTB/Kelch associated) domain. Contains 1 BTB (POZ) domain. Contains 6 Kelch repeats.
SUBUNIT	Interacts with CUL3.
Important Note	This product as supplied is intended for research use only, not for use in human, therapeutic or diagnostic applications.
Background Descriptions	C16orf44 is a 616 amino acid protein that contains six Kelch repeats, one BTB/POZ domain and one BTB/Kelch associated (BACK) domain. C16orf44 is believed to play a role in protein ubiquitination and may function as a substrate-specific adapter of an E3 ubiquitin-protein ligase complex. E3 ligases accept a ubiquitin residue from an E2 ubiquitin-conjugating enzyme and immediately transfer that residue to a protein that is targeted for degradation. Specifically, C16orf44 interacts with CUL-3, a member of the cullin family of mediators that participate in the selective targeting of proteins for ubiquitin-mediated proteolysis. Due to alternative splicing events, two isoforms of C16orf44 are expressed.

Additional Information

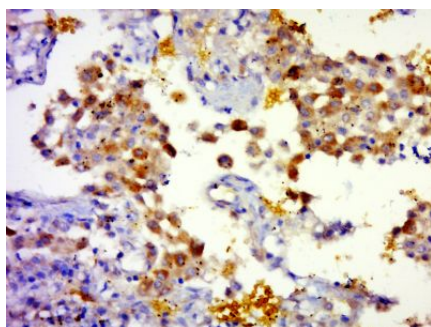
Gene ID	79786
Other Names	Kelch-like protein 36, KLHL36, C16orf44
Dilution	WB=1:500-2000,IHC-P=1:100-500,IHC-F=1:100-500,ICC=1:100-500,IF=1:100-500,ELISA=1:5000-10000
Format	0.01M TBS(pH7.4) with 1% BSA, 0.09% (W/V) sodium azide and 50% Glyce
Storage	Store at -20 °C for one year. Avoid repeated freeze/thaw cycles. When reconstituted in sterile pH 7.4 0.01M PBS or diluent of antibody the antibody

is stable for at least two weeks at 2-4 °C.

Protein Information

Name	KLHL36
Synonyms	C16orf44
Function	Probable substrate-specific adapter of an E3 ubiquitin- protein ligase complex which mediates the ubiquitination and subsequent proteasomal degradation of target proteins.

Images



Paraformaldehyde-fixed, paraffin embedded (human lung cancer); Antigen retrieval by boiling in sodium citrate buffer (pH6.0) for 15min; Block endogenous peroxidase by 3% hydrogen peroxide for 20 minutes; Blocking buffer (normal goat serum) at 37°C for 30min; Antibody incubation with (KLHL) Polyclonal Antibody, Unconjugated (AP59313) at 1:400 overnight at 4°C, followed by a conjugated secondary (sp-0023) for 20 minutes and DAB staining.

Please note: All products are 'FOR RESEARCH USE ONLY. NOT FOR USE IN DIAGNOSTIC OR THERAPEUTIC PROCEDURES'.