

ANKLE2 Polyclonal Antibody

Purified Rabbit Polyclonal Antibody (Pab)

Catalog # AP59371

Product Information

Application	WB, IHC-P, IHC-F, IF, E
Primary Accession	Q86XL3
Reactivity	Rat, Bovine
Host	Rabbit
Clonality	Polyclonal
Calculated MW	104114
Physical State	Liquid
Immunogen	KLH conjugated synthetic peptide derived from human ANKLE2
Epitope Specificity	251-350/938
Isotype	IgG
Purity	affinity purified by Protein A
Buffer	0.01M TBS (pH7.4) with 1% BSA, 0.02% Proclin300 and 50% Glycerol.
SUBCELLULAR LOCATION	Endoplasmic reticulum membrane; Single-pass type III membrane protein.
SIMILARITY	Belongs to the ANKLE2 family. Contains 1 ANK repeat. Contains 1 LEM domain.
SUBUNIT	Interacts with BAF/BANF1. Interacts with protein phosphatase 2A (PP2A) components PPP2C (PPP2CA or PPP2CB) and PPP2R1A.
Important Note	This product as supplied is intended for research use only, not for use in human, therapeutic or diagnostic applications.
Background Descriptions	Ankyrins are membrane adaptor molecules that play important roles in coupling integral membrane proteins to the spectrin-based cytoskeleton network. Mutations of ankyrin genes lead to severe genetic diseases such as fatal cardiac arrhythmias and hereditary spherocytosis. ANKLE2 (ankyrin repeat and LEM domain containing 2), also known as LEMD7, is a 938 amino acid single-pass membrane protein containing an ANK repeat and a LEM domain. Existing as two isoforms produced by alternative splicing events, the gene encoding ANKLE2 maps to human chromosome 12, which encodes over 1,100 genes and comprises approximately 4.5% of the human genome. Chromosome 12 is associated with a variety of diseases and afflictions, including hypochondrogenesis, achondrogenesis, Kniest dysplasia, Noonan syndrome and trisomy 12p, which causes facial developmental defects and seizure disorders.

Additional Information

Gene ID	23141
Other Names	Ankyrin repeat and LEM domain-containing protein 2, LEM domain-containing protein 4, ANKLE2, KIAA0692, LEM4
Dilution	WB=1:500-2000,IHC-P=1:100-500,IHC-F=1:100-500,IF=1:50-200,ELISA=1:5000-

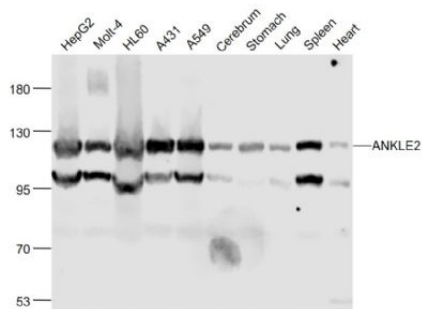
10000

Format	0.01M TBS(pH7.4) with 1% BSA, 0.09% (W/V) sodium azide and 50% Glyce
Storage	Store at -20 °C for one year. Avoid repeated freeze/thaw cycles. When reconstituted in sterile pH 7.4 0.01M PBS or diluent of antibody the antibody is stable for at least two weeks at 2-4 °C.

Protein Information

Name	ANKLE2
Synonyms	KIAA0692, LEM4
Function	Involved in mitotic nuclear envelope reassembly by promoting dephosphorylation of BAF/BANF1 during mitotic exit (PubMed: 22770216). Coordinates the control of BAF/BANF1 dephosphorylation by inhibiting VRK1 kinase and promoting dephosphorylation of BAF/BANF1 by protein phosphatase 2A (PP2A), thereby facilitating nuclear envelope assembly (PubMed: 22770216). May regulate nuclear localization of VRK1 in non-dividing cells (PubMed: 31735666). It is unclear whether it acts as a real PP2A regulatory subunit or whether it is involved in recruitment of the PP2A complex (PubMed: 22770216). Involved in brain development (PubMed: 25259927).
Cellular Location	Endoplasmic reticulum membrane; Single-pass type III membrane protein

Images



Sample:

HepG2(Human) Cell Lysate at 30 ug
Molt-4(Human) Cell Lysate at 30 ug
HL60(Human) Cell Lysate at 30 ug
A431(Human) Cell Lysate at 30 ug
A549(Human) Cell Lysate at 30 ug
Cerebrum (Mouse) Lysate at 40 ug
Stomach (Mouse) Lysate at 40 ug
Lung (Mouse) Lysate at 40 ug
Spleen (Mouse) Lysate at 40 ug
Heart (Mouse) Lysate at 40 ug
Primary: Anti-ANKLE2 (AP59371) at 1/1000 dilution
Secondary: IRDye800CW Goat Anti-Rabbit IgG at 1/20000 dilution
Predicted band size: 117 kD
Observed band size: 117 kD

Please note: All products are 'FOR RESEARCH USE ONLY. NOT FOR USE IN DIAGNOSTIC OR THERAPEUTIC PROCEDURES'.