

# BCL7C Polyclonal Antibody

Purified Rabbit Polyclonal Antibody (Pab)

Catalog # AP59377

## Product Information

---

<b>Application</b>	WB, IHC-P, IHC-F, IF, E
<b>Primary Accession</b>	<a href="#">Q8WUZO</a>
<b>Reactivity</b>	Rat, Pig, Dog, Bovine
<b>Host</b>	Rabbit
<b>Clonality</b>	Polyclonal
<b>Calculated MW</b>	23468

## Additional Information

---

<b>Gene ID</b>	9274
<b>Other Names</b>	B-cell CLL/lymphoma 7 protein family member C, BCL7C
<b>Dilution</b>	WB=1:500-2000,IHC-P=1:100-500,IHC-F=1:100-500,IF=1:50-200,ELISA=1:5000-10000
<b>Format</b>	0.01M TBS(pH7.4) with 1% BSA, 0.09% (W/V) sodium azide and 50% Glyce
<b>Storage</b>	Store at -20 °C for one year. Avoid repeated freeze/thaw cycles. When reconstituted in sterile pH 7.4 0.01M PBS or diluent of antibody the antibody is stable for at least two weeks at 2-4 °C.

## Protein Information

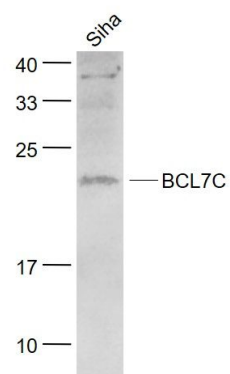
---

<b>Name</b>	BCL7C
<b>Function</b>	May play an anti-apoptotic role.
<b>Tissue Location</b>	Ubiquitous..

## Images

---

Sample:  
Siha (Mouse) Lysate at 40 ug  
Primary: Anti- BCL7C (AP59377) at 1/1000 dilution  
Secondary: IRDye800CW Goat Anti-Rabbit IgG at 1/20000 dilution  
Predicted band size: 23 kD  
Observed band size: 23 kD



Please note: All products are 'FOR RESEARCH USE ONLY. NOT FOR USE IN DIAGNOSTIC OR THERAPEUTIC PROCEDURES'.