

C1orf96 Polyclonal Antibody

Purified Rabbit Polyclonal Antibody (Pab)

Catalog # AP59384

Product Information

Application	WB, IHC-P, IHC-F, IF, E
Primary Accession	Q6IQ19
Reactivity	Rat, Dog
Host	Rabbit
Clonality	Polyclonal
Calculated MW	30216

Additional Information

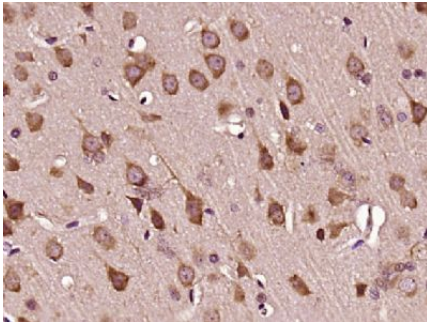
Gene ID	126731
Other Names	Centriole, cilia and spindle-associated protein, CCSAP, C1orf96, CSAP
Dilution	WB=1:500-2000,IHC-P=1:100-500,IHC-F=1:100-500,IF=1:50-200,ELISA=1:5000-10000
Format	0.01M TBS(pH7.4) with 1% BSA, 0.09% (W/V) sodium azide and 50% Glyce
Storage	Store at -20 °C for one year. Avoid repeated freeze/thaw cycles. When reconstituted in sterile pH 7.4 0.01M PBS or diluent of antibody the antibody is stable for at least two weeks at 2-4 °C.

Protein Information

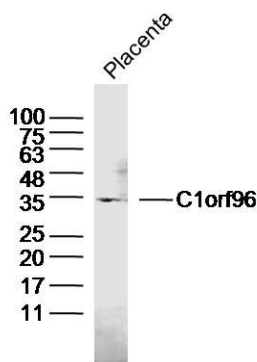
Name	CCSAP
Synonyms	C1orf96, CSAP
Function	Plays a role in microtubule (MT) stabilization and this stabilization involves the maintenance of NUMA1 at the spindle poles. Colocalizes with polyglutamylated MTs to promote MT stabilization and regulate bipolar spindle formation in mitosis. Binding of CCSAP to centrosomes and the spindle around centrosomes during mitosis inhibits MT depolymerization, thereby stabilizing the mitotic spindle (PubMed: 26562023). May play a role in embryonic development. May be required for proper cilia beating (By similarity).
Cellular Location	Cytoplasm, cytoskeleton, microtubule organizing center, centrosome, centriole. Cytoplasm, cytoskeleton, spindle. Cytoplasm, cytoskeleton. Cytoplasm, cytoskeleton, cilium basal body. Cytoplasm, cytoskeleton, cilium axoneme. Cell projection, axon. Cell projection, cilium. Cytoplasm, cytoskeleton, microtubule organizing center, centrosome. Note=Localizes to

two to four centrioles throughout the cell cycle. Localizes to mitotic spindle microtubules during prometaphase and throughout the remainder of mitosis. Localizes to cytoskeleton on interphase. Localizes at the ciliary transition zone which connects the basal bodies to ciliary microtubules. Colocalizes with polyglutamylated tubulin.

Images



Paraformaldehyde-fixed, paraffin embedded (Rat brain); Antigen retrieval by boiling in sodium citrate buffer (pH6.0) for 15min; Block endogenous peroxidase by 3% hydrogen peroxide for 20 minutes; Blocking buffer (normal goat serum) at 37°C for 30min; Antibody incubation with (C1orf96) Polyclonal Antibody, Unconjugated (AP59384) at 1:400 overnight at 4°C, followed by operating according to SP Kit(Rabbit) (sp-0023) instructions and DAB staining.



Sample: Placenta (Mouse) Lysate at 40 ug
Primary: Anti-C1orf96 (AP59384) at 1/300 dilution
Secondary: IRDye800CW Goat Anti-Rabbit IgG at 1/20000 dilution
Predicted band size: 30kD
Observed band size: 34kD

Please note: All products are 'FOR RESEARCH USE ONLY. NOT FOR USE IN DIAGNOSTIC OR THERAPEUTIC PROCEDURES'.