

C2orf42 Polyclonal Antibody

Purified Rabbit Polyclonal Antibody (Pab)

Catalog # AP59392

Product Information

Application	WB, IHC-P, IHC-F, IF, E
Primary Accession	Q9NWW7
Reactivity	Rat, Pig, Bovine
Host	Rabbit
Clonality	Polyclonal
Calculated MW	64077
Physical State	Liquid
Immunogen	KLH conjugated synthetic peptide derived from human C2orf42
Epitope Specificity	1-100/574
Isotype	IgG
Purity	affinity purified by Protein A

Buffer 0.01M TBS (pH7.4) with 1% BSA, 0.02% Proclin300 and 50% Glycerol.

Important Note This product as supplied is intended for research use only, not for use in human, therapeutic or diagnostic applications.

Background Descriptions C2orf42 (chromosome 2 open reading frame 42) is a 574 amino acid protein encoded by a gene that maps to human chromosome 2q11.2. As the second largest human chromosome, chromosome 2 makes up approximately 8% of the human genome and contains 237 million bases encoding over 1,400 genes. A number of genetic diseases are linked to genes on chromosome 2. Harlequin ichthyosis, a rare skin deformity, is associated with mutations in the ABCA12 gene. The lipid metabolic disorder sitosterolemia is associated with ABCG5 and ABCG8. An extremely rare recessive genetic disorder, Alström syndrome, is related to mutations in the ALMS1 gene. Chromosome 2 contains a probable vestigial second centromere as well as vestigial telomeres, which gives credence to the hypothesis that human chromosome 2 formed as a result of an ancient fusion of two ancestral chromosomes, which are still present in modern day apes.

Additional Information

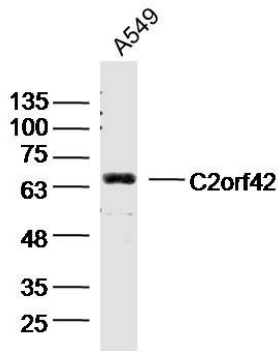
Gene ID	54980
Other Names	Uncharacterized protein C2orf42, C2orf42
Dilution	WB=1:500-2000,IHC-P=1:100-500,IHC-F=1:100-500,IF=1:50-200,ELISA=1:5000-10000
Format	0.01M TBS(pH7.4) with 1% BSA, 0.09% (W/V) sodium azide and 50% Glyce
Storage	Store at -20 °C for one year. Avoid repeated freeze/thaw cycles. When reconstituted in sterile pH 7.4 0.01M PBS or diluent of antibody the antibody

is stable for at least two weeks at 2-4 °C.

Protein Information

Name C2orf42

Images



Sample: A549 Cell (Human) Lysate at 30 ug
Primary: Anti- C2orf42 (AP59392) at 1/300 dilution
Secondary: IRDye800CW Goat Anti-Rabbit IgG at 1/20000 dilution
Predicted band size: 64kD
Observed band size: 64kD

Please note: All products are 'FOR RESEARCH USE ONLY. NOT FOR USE IN DIAGNOSTIC OR THERAPEUTIC PROCEDURES'.