

C3orf17 Polyclonal Antibody

Purified Rabbit Polyclonal Antibody (Pab)

Catalog # AP59399

Product Information

Application	WB, IHC-P, IHC-F, IF, E
Primary Accession	Q6NW34
Reactivity	Rat, Pig
Host	Rabbit
Clonality	Polyclonal
Calculated MW	64552
Physical State	Liquid
Immunogen	KLH conjugated synthetic peptide derived from human C3orf17
Epitope Specificity	401-500/567
Isotype	IgG
Purity	affinity purified by Protein A
Buffer	0.01M TBS (pH7.4) with 1% BSA, 0.02% Proclin300 and 50% Glycerol.
SUBCELLULAR LOCATION	Nucleus
Important Note	This product as supplied is intended for research use only, not for use in human, therapeutic or diagnostic applications.
Background Descriptions	Chromosome 3 is made up of about 214 million bases encoding over 1,100 genes. Notably, there is a chemokine receptor gene cluster and a variety of human cancer related loci on chromosome 3. Particular regions of the chromosome 3 short arm are deleted in many types of cancer cells. Key tumor suppressing genes on chromosome 3 encode apoptosis mediator RASSF1, cell migration regulator HYAL1 and angiogenesis suppressor SEMA3B. Marfan Syndrome, porphyria, von Hippel-Lindau syndrome, osteogenesis imperfecta and Charcot-Marie-Tooth Disease are a few of the numerous genetic diseases associated with chromosome 3. The C3orf17 gene product has been provisionally designated C3orf17 pending further characterization.

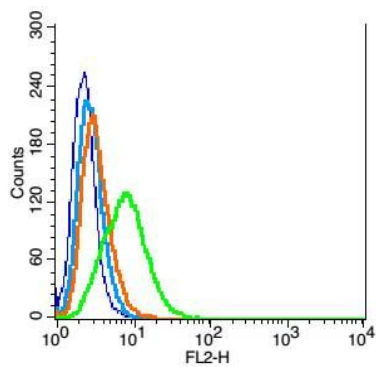
Additional Information

Gene ID	25871
Other Names	Nucleolus and neural progenitor protein, NEPRO (HGNC:24496), C3orf17
Dilution	WB=1:500-2000,IHC-P=1:100-500,IHC-F=1:100-500,IF=1:50-200,Flow-Cyt=1 µg/Test,ELISA=1:5000-10000
Format	0.01M TBS(pH7.4) with 1% BSA, 0.09% (W/V) sodium azide and 50% Glyce
Storage	Store at -20 °C for one year. Avoid repeated freeze/thaw cycles. When reconstituted in sterile pH 7.4 0.01M PBS or diluent of antibody the antibody is stable for at least two weeks at 2-4 °C.

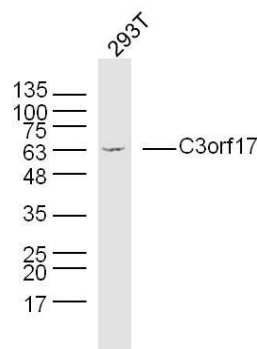
Protein Information

Name	NEPRO (HGNC:24496)
Synonyms	C3orf17
Function	May play a role in cortex development as part of the Notch signaling pathway. Downstream of Notch may repress the expression of proneural genes and inhibit neuronal differentiation thereby maintaining neural progenitors. May also play a role in preimplantation embryo development.
Cellular Location	Nucleus {ECO:0000250 UniProtKB:Q8R2U2}. Nucleus, nucleolus {ECO:0000250 UniProtKB:Q8R2U2}

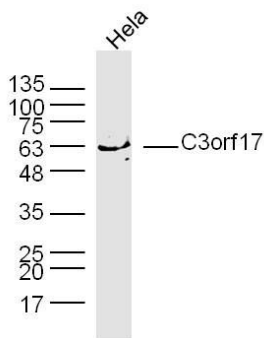
Images



Blank control(blue):RSC96 (fixed with 2% paraformaldehyde (10 min)).
Primary Antibody:Rabbit Anti- C3orf17 antibody(bs-1638R), Dilution: 1 µg in 100 µL 1X PBS containing 0.5% BSA;
Isotype Control Antibody: Rabbit IgG(orange) ,used under the same conditions);
Secondary Antibody: Goat anti-rabbit IgG-PE(white blue), Dilution: 1:200 in 1 X PBS containing 0.5% BSA.



Sample: 293T Cell (Human) Lysate at 40 ug
Primary: Anti-C3orf17 (AP59399) at 1/300 dilution
Secondary: IRDye800CW Goat Anti-Rabbit IgG at 1/20000 dilution
Predicted band size: 65 kD
Observed band size: 63 kD



Sample: HeLa Cell (Human) Lysate at 40 ug
Primary: Anti-C3orf17 (AP59399) at 1/300 dilution
Secondary: IRDye800CW Goat Anti-Rabbit IgG at 1/20000 dilution
Predicted band size: 65 kD
Observed band size: 63 kD

Please note: All products are 'FOR RESEARCH USE ONLY. NOT FOR USE IN DIAGNOSTIC OR THERAPEUTIC PROCEDURES'.