

ESRP1 Antibody (N-term)

Affinity Purified Rabbit Polyclonal Antibody (Pab)

Catalog # AP5940a

Product Information

Application	WB, IHC-P, E
Primary Accession	Q6NXG1
Other Accession	B2RYD2 , Q3US41 , NP_001116298.1 , NP_060167.2 , NP_001030087.2 , NP_001116299.1 , NP_001116297.1
Reactivity	Human, Rat, Mouse
Predicted	Mouse, Rat
Host	Rabbit
Clonality	Polyclonal
Isotype	Rabbit IgG
Calculated MW	75585
Antigen Region	182-211

Additional Information

Gene ID	54845
Other Names	Epithelial splicing regulatory protein 1, RNA-binding motif protein 35A, RNA-binding protein 35A, ESRP1, RBM35A
Target/Specificity	This ESRP1 antibody is generated from rabbits immunized with a KLH conjugated synthetic peptide between 182-211 amino acids of human ESRP1.
Dilution	WB~~1:1000 IHC-P~~1:100~500 E~~Use at an assay dependent concentration.
Format	Purified polyclonal antibody supplied in PBS with 0.05% (V/V) Proclin 300. This antibody is prepared by Saturated Ammonium Sulfate (SAS) precipitation followed by dialysis against PBS.
Storage	Maintain refrigerated at 2-8°C for up to 2 weeks. For long term storage store at -20°C in small aliquots to prevent freeze-thaw cycles.
Precautions	ESRP1 Antibody (N-term) is for research use only and not for use in diagnostic or therapeutic procedures.

Protein Information

Name	ESRP1
Synonyms	RBM35A
Function	mRNA splicing factor that regulates the formation of epithelial cell-specific

isoforms. Specifically regulates the expression of FGFR2-IIIb, an epithelial cell-specific isoform of FGFR2. Also regulates the splicing of CD44, CTNND1, ENAH, 3 transcripts that undergo changes in splicing during the epithelial-to-mesenchymal transition (EMT). Acts by directly binding specific sequences in mRNAs. Binds the GU-rich sequence motifs in the ISE/ISS-3, a cis-element regulatory region present in the mRNA of FGFR2 (PubMed:[19285943](#)). Regulates splicing and expression of genes involved in inner ear development, auditory hair cell differentiation, and cell fate specification in the cochlear epithelium (By similarity).

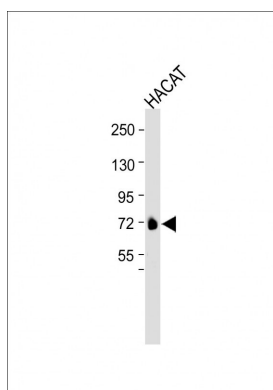
Cellular Location

Nucleus.

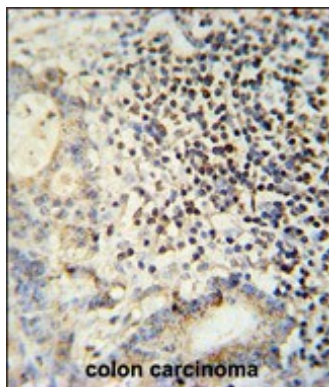
Tissue Location

Epithelial cell-specific.

Images



All lanes : Anti-ESRP1 Antibody (N-term) at 1:1000 dilution
Lane 1: HACAT whole cell lysate Lysates/proteins at 20 µg per lane. Secondary Goat Anti-Rabbit IgG, (H+L), Peroxidase conjugated at 1/10000 dilution. Observed band size :72kDa Blocking/Dilution buffer: 5% NFDM/TBST.



ESRP1 antibody (N-term) (Cat. #AP5940a) immunohistochemistry analysis in formalin fixed and paraffin embedded human colon carcinoma followed by peroxidase conjugation of the secondary antibody and DAB staining. This data demonstrates the use of the ESRP1 antibody (N-term) for immunohistochemistry. Clinical relevance has not been evaluated.

Citations

- [Transcriptomic analysis of PNN- and ESRP1-regulated alternative pre-mRNA splicing in human corneal epithelial cells.](#)

Please note: All products are 'FOR RESEARCH USE ONLY. NOT FOR USE IN DIAGNOSTIC OR THERAPEUTIC PROCEDURES'.