

Anti-Beta-actin Antibody

Mouse monoclonal antibody to Beta-actin

Catalog # AP59466

Product Information

Application	WB
Primary Accession	Q7ZVI7
Reactivity	Zebrafish
Host	Mouse
Clonality	Monoclonal
Calculated MW	41767

Additional Information

Gene ID	57934
Other Names	Actin cytoplasmic 1; Beta-actin
Target/Specificity	Recognizes endogenous levels of Beta-actin protein.
Dilution	WB~~1/2000 - 1/5000
Format	Liquid in 0.42% Potassium phosphate, 0.87% Sodium chloride, pH 7.3, 30% glycerol, and 0.09% (W/V) sodium azide.
Storage	Store at -20 °C.Stable for 12 months from date of receipt

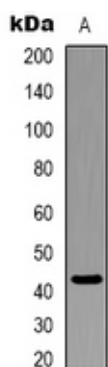
Protein Information

Name	actba
Synonyms	bact, bactin1, bactzf
Function	Actin is a highly conserved protein that polymerizes to produce filaments that form cross-linked networks in the cytoplasm of cells. Actin exists in both monomeric (G-actin) and polymeric (F-actin) forms, both forms playing key functions, such as cell motility and contraction. In addition to their role in the cytoplasmic cytoskeleton, G- and F-actin also localize in the nucleus, and regulate gene transcription and motility and repair of damaged DNA.
Cellular Location	Cytoplasm, cytoskeleton {ECO:0000250 UniProtKB:P60710}. Nucleus {ECO:0000250 UniProtKB:O93400}
Tissue Location	Skeletal muscle, heart, gill, digestive tissue and brain (PubMed:9987040). Widespread expression throughout the brain, with highest levels in regions where neuronal proliferation is greatest (PubMed:9987040).

Background

KLH-conjugated synthetic peptide encompassing a sequence of zebrafish Beta-actin. The exact sequence is proprietary.

Images



Western blot analysis of Beta-actin expression in zebrafish skeletal muscle (A) whole cell lysates.

Please note: All products are 'FOR RESEARCH USE ONLY. NOT FOR USE IN DIAGNOSTIC OR THERAPEUTIC PROCEDURES'.