

# Anti-Gamma-actin-1 Antibody

Rabbit polyclonal antibody to Gamma-actin-1  
Catalog # AP59472

## Product Information

Application	WB, IHC
Primary Accession	<a href="#">P60709</a> , <a href="#">Q9BYX7</a> , <a href="#">P63261</a>
Other Accession	<a href="#">P60710</a> , <a href="#">P63260</a>
Reactivity	Human, Mouse, Rat, Rabbit, Pig, Chicken, Bovine, SARS
Host	Rabbit
Clonality	Polyclonal
Calculated MW	41737

## Additional Information

Gene ID	60
Other Names	ACTB; Actin, cytoplasmic 1; Beta-actin; POTEKP; ACTBL3; FKSG30; Putative beta-actin-like protein 3; Kappa-actin; POTE ankyrin domain family member K; ACTG1; ACTB; ACTG; Actin, cytoplasmic 2; Gamma-actin
Target/Specificity	Recognizes endogenous levels of Gamma-actin-1 protein.
Dilution	WB~~WB (1/500 - 1/1000), IHC (1/100 - 1/200) IHC~~WB (1/500 - 1/1000), IHC (1/100 - 1/200)
Format	Liquid in 0.42% Potassium phosphate, 0.87% Sodium chloride, pH 7.3, 30% glycerol, and 0.09% (W/V) sodium azide.
Storage	Store at -20 °C.Stable for 12 months from date of receipt

## Protein Information

Name	ACTB
Function	Actin is a highly conserved protein that polymerizes to produce filaments that form cross-linked networks in the cytoplasm of cells (PubMed: <a href="#">25255767</a> , PubMed: <a href="#">29581253</a> ). Actin exists in both monomeric (G-actin) and polymeric (F-actin) forms, both forms playing key functions, such as cell motility and contraction (PubMed: <a href="#">29581253</a> ). In addition to their role in the cytoplasmic cytoskeleton, G- and F- actin also localize in the nucleus, and regulate gene transcription and motility and repair of damaged DNA (PubMed: <a href="#">29925947</a> ). Plays a role in the assembly of the gamma-tubulin ring complex (gTuRC), which regulates the minus-end nucleation of alpha-beta tubulin heterodimers that grow into microtubule protofilaments (PubMed: <a href="#">39321809</a> , PubMed: <a href="#">38609661</a> ). Part of the ACTR1A/ACTB filament around which the dynactin complex is built (By similarity). The dynactin multiprotein complex

activates the molecular motor dynein for ultra-processive transport along microtubules (By similarity).

#### Cellular Location

Cytoplasm, cytoskeleton. Nucleus Note=Localized in cytoplasmic mRNP granules containing untranslated mRNAs.

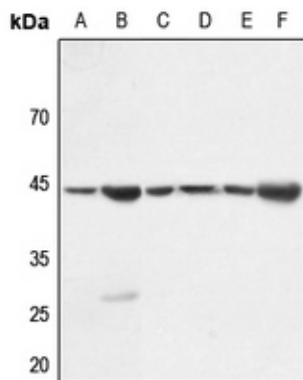
## Background

---

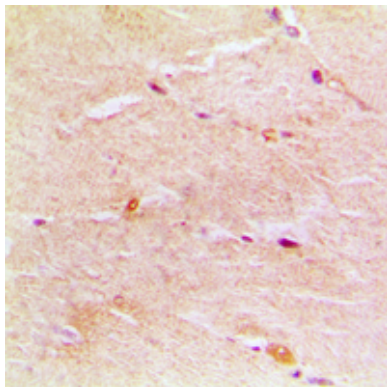
KLH-conjugated synthetic peptide encompassing a sequence within the C-term region of human Gamma-actin-1. The exact sequence is proprietary.

## Images

---



Western blot analysis of Gamma-actin-1 expression in HEK293T (A), Hela (B), mouse brain (C), rat muscle (D), rat brain (E), rat spleen (F) whole cell lysates.



Immunohistochemical analysis of Gamma-actin-1 staining in human muscle formalin fixed paraffin embedded tissue section. The section was pre-treated using heat mediated antigen retrieval with sodium citrate buffer (pH 6.0). The section was then incubated with the antibody at room temperature and detected using an HRP conjugated compact polymer system. DAB was used as the chromogen. The section was then counterstained with haematoxylin and mounted with DPX.

Please note: All products are 'FOR RESEARCH USE ONLY. NOT FOR USE IN DIAGNOSTIC OR THERAPEUTIC PROCEDURES'.