

Anti-Alpha-actin-3 Antibody

Rabbit polyclonal antibody to Alpha-actin-3
Catalog # AP59473

Product Information

Application	WB, IF/IC, IHC
Primary Accession	P63267
Other Accession	P63268
Reactivity	Human, Mouse, Rat, Rabbit, Chicken, Bovine
Host	Rabbit
Clonality	Polyclonal
Calculated MW	41877

Additional Information

Gene ID	72
Other Names	ACTA3; ACTL3; ACTSG; Actin, gamma-enteric smooth muscle; Alpha-actin-3; Gamma-2-actin; Smooth muscle gamma-actin
Target/Specificity	Recognizes endogenous levels of Alpha-actin-3 protein.
Dilution	WB~~WB (1/500 - 1/1000), IHC (1/100 - 1/200), IF/IC (1/100 - 1/500) IF/IC~~N/A IHC~~WB (1/500 - 1/1000), IHC (1/100 - 1/200), IF/IC (1/100 - 1/500)
Format	Liquid in 0.42% Potassium phosphate, 0.87% Sodium chloride, pH 7.3, 30% glycerol, and 0.09% (W/V) sodium azide.
Storage	Store at -20 °C.Stable for 12 months from date of receipt

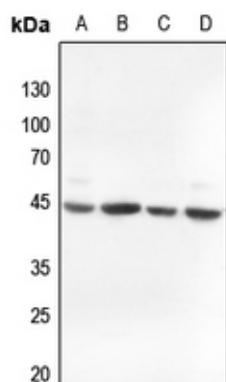
Protein Information

Name	ACTG2
Synonyms	ACTA3, ACTL3, ACTSG
Function	Actins are highly conserved proteins that are involved in various types of cell motility and are ubiquitously expressed in all eukaryotic cells.
Cellular Location	Cytoplasm, cytoskeleton.
Tissue Location	In the intestine, abundantly expressed in smooth muscle cells of muscularis mucosa and muscularis propria. Also detected in intestinal vascular smooth muscle cells

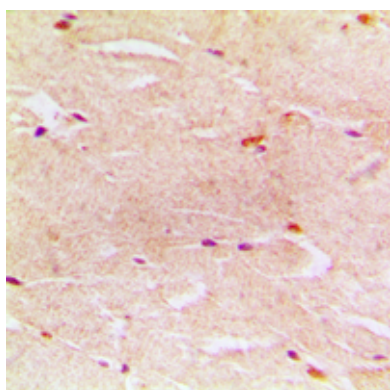
Background

KLH-conjugated synthetic peptide encompassing a sequence within the N-term region of human Alpha-actin-3. The exact sequence is proprietary.

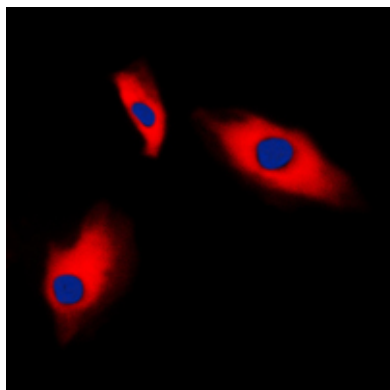
Images



Western blot analysis of Alpha-actin-3 expression in HeLa (A), H446 (B), mouse lung (C), rat lung (D) whole cell lysates.



Immunohistochemical analysis of Alpha-actin-3 staining in human muscle formalin fixed paraffin embedded tissue section. The section was pre-treated using heat mediated antigen retrieval with sodium citrate buffer (pH 6.0). The section was then incubated with the antibody at room temperature and detected using an HRP conjugated compact polymer system. DAB was used as the chromogen. The section was then counterstained with haematoxylin and mounted with DPX.



Immunofluorescent analysis of Alpha-actin-3 staining in HeLa cells. Formalin-fixed cells were permeabilized with 0.1% Triton X-100 in TBS for 5-10 minutes and blocked with 3% BSA-PBS for 30 minutes at room temperature. Cells were probed with the primary antibody in 3% BSA-PBS and incubated overnight at 4 °C in a humidified chamber. Cells were washed with PBST and incubated with a DyLight 594-conjugated secondary antibody (red) in PBS at room temperature in the dark. DAPI was used to stain the cell nuclei (blue).

Please note: All products are 'FOR RESEARCH USE ONLY. NOT FOR USE IN DIAGNOSTIC OR THERAPEUTIC PROCEDURES'.