

Anti-BMP3A Antibody

Rabbit polyclonal antibody to BMP3A

Catalog # AP59487

Product Information

Application	WB, IP
Primary Accession	P12645
Reactivity	Human, Rat
Host	Rabbit
Clonality	Polyclonal
Calculated MW	53372

Additional Information

Gene ID	651
Other Names	BMP3A; Bone morphogenetic protein 3; BMP-3; Bone morphogenetic protein 3A; BMP-3A; Osteogenin
Target/Specificity	KLH-conjugated synthetic peptide encompassing a sequence within the center region of human BMP3A. The exact sequence is proprietary.
Dilution	WB~~WB (1/500 - 1/1000), IP (1/10 - 1/100) IP~~N/A
Format	Liquid in 0.42% Potassium phosphate, 0.87% Sodium chloride, pH 7.3, 30% glycerol, and 0.09% (W/V) sodium azide.
Storage	Store at -20 °C.Stable for 12 months from date of receipt

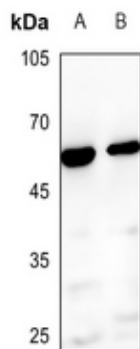
Protein Information

Name	BMP3
Synonyms	BMP3A
Function	Growth factor of the TGF-beta superfamily that plays an essential role in developmental process by inducing and patterning early skeletal formation and by negatively regulating bone density. Antagonizes the ability of certain osteogenic BMPs to induce osteoprogenitor differentiation and ossification (PubMed: 11138004 , PubMed: 15269709). Initiates signaling cascades by associating with type II receptor ACVR2B to activate SMAD2-dependent and SMAD-independent signaling cascades including TAK1 and JNK pathways (PubMed: 31665064).
Cellular Location	Secreted.
Tissue Location	Expressed in adult and fetal cartilage.

Background

KLH-conjugated synthetic peptide encompassing a sequence within the center region of human BMP3A. The exact sequence is proprietary.

Images



Western blot analysis of BMP3A expression in mouse lung (A), mouse kidney (B) whole cell lysates.

Please note: All products are 'FOR RESEARCH USE ONLY. NOT FOR USE IN DIAGNOSTIC OR THERAPEUTIC PROCEDURES'.