

# Anti-BMP7 Antibody

Rabbit polyclonal antibody to BMP7

Catalog # AP59488

## Product Information

---

Application	WB, IHC
Primary Accession	<a href="#">P18075</a>
Other Accession	<a href="#">P23359</a>
Reactivity	Human, Mouse, Rat, Rabbit, Monkey, Pig, Chicken, Drosophila
Host	Rabbit
Clonality	Polyclonal
Calculated MW	49313

## Additional Information

---

Gene ID	655
Other Names	OP1; Bone morphogenetic protein 7; BMP-7; Osteogenic protein 1; OP-1; Eptoterminalfa
Target/Specificity	Recognizes endogenous levels of BMP7 protein.
Dilution	WB~~WB (1/500 - 1/1000), IHC (1/100 - 1/200) IHC~~WB (1/500 - 1/1000), IHC (1/100 - 1/200)
Format	Liquid in 0.42% Potassium phosphate, 0.87% Sodium chloride, pH 7.3, 30% glycerol, and 0.09% (W/V) sodium azide.
Storage	Store at -20 °C.Stable for 12 months from date of receipt

## Protein Information

---

Name	BMP7
Synonyms	OP1
Function	Growth factor of the TGF-beta superfamily that plays important role in various biological processes, including embryogenesis, hematopoiesis, neurogenesis and skeletal morphogenesis (PubMed: <a href="#">31208997</a> ). Initiates the canonical BMP signaling cascade by associating with type I receptor ACVR1 and type II receptor ACVR2A (PubMed: <a href="#">12667445</a> , PubMed: <a href="#">9748228</a> ). Once all three components are bound together in a complex at the cell surface, ACVR2A phosphorylates and activates ACVR1. In turn, ACVR1 propagates signal by phosphorylating SMAD1/5/8 that travel to the nucleus and act as activators and repressors of transcription of target genes (PubMed: <a href="#">12478285</a> ). For specific functions such as growth cone collapse in developing spinal neurons and chemotaxis of monocytes, also uses BMP2 as type II receptor

(PubMed:[31208997](#)). Can also signal through non-canonical pathways such as P38 MAP kinase signaling cascade that promotes brown adipocyte differentiation through activation of target genes, including members of the SOX family of transcription factors (PubMed:[27923061](#)). Promotes the expression of HAMP, this is repressed by its interaction with ERFE (PubMed:[30097509](#)).

**Cellular Location**

Secreted.

**Tissue Location**

Expressed in the kidney and bladder. Lower levels seen in the brain

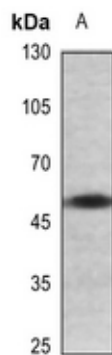
## Background

---

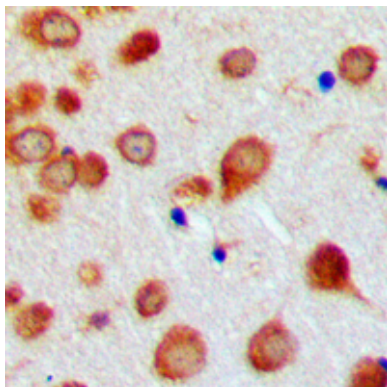
KLH-conjugated synthetic peptide encompassing a sequence within the center region of human BMP7. The exact sequence is proprietary.

## Images

---



Western blot analysis of BMP7 expression in mouse heart (A) whole cell lysates.



Immunohistochemical analysis of BMP7 staining in human brain formalin fixed paraffin embedded tissue section. The section was pre-treated using heat mediated antigen retrieval with sodium citrate buffer (pH 6.0). The section was then incubated with the antibody at room temperature and detected using an HRP conjugated compact polymer system. DAB was used as the chromogen. The section was then counterstained with haematoxylin and mounted with DPX.

Please note: All products are 'FOR RESEARCH USE ONLY. NOT FOR USE IN DIAGNOSTIC OR THERAPEUTIC PROCEDURES'.