

Anti-BRS3 Antibody

Rabbit polyclonal antibody to BRS3

Catalog # AP59490

Product Information

Application	WB
Primary Accession	P32247
Reactivity	Human, Rat
Host	Rabbit
Clonality	Polyclonal
Calculated MW	44411

Additional Information

Gene ID	680
Other Names	Bombesin receptor subtype-3; BRS-3
Target/Specificity	KLH-conjugated synthetic peptide encompassing a sequence within the center region of human BRS3. The exact sequence is proprietary.
Dilution	WB~~WB (1/500 - 1/1000)
Format	Liquid in 0.42% Potassium phosphate, 0.87% Sodium chloride, pH 7.3, 30% glycerol, and 0.09% (W/V) sodium azide.
Storage	Store at -20 °C.Stable for 12 months from date of receipt

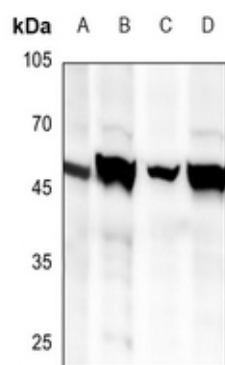
Protein Information

Name	BRS3
Function	Role in sperm cell division, maturation, or function. This receptor mediates its action by association with G proteins that activate a phosphatidylinositol-calcium second messenger system.
Cellular Location	Cell membrane; Multi-pass membrane protein.
Tissue Location	In germ cells in testis. Lung carcinoma cells.

Background

KLH-conjugated synthetic peptide encompassing a sequence within the center region of human BRS3. The exact sequence is proprietary.

Images



Western blot analysis of BRS3 expression in A549 (A), H9C2 (B), PC3 (C), Panc1 (D) whole cell lysates.

Please note: All products are 'FOR RESEARCH USE ONLY. NOT FOR USE IN DIAGNOSTIC OR THERAPEUTIC PROCEDURES'.