

Anti-Carbonic Anhydrase 9 Antibody

Rabbit polyclonal antibody to Carbonic Anhydrase 9

Catalog # AP59494

Product Information

Application	WB
Primary Accession	Q16790
Other Accession	Q8VHB5
Reactivity	Human, Mouse, Rat
Host	Rabbit
Clonality	Polyclonal
Calculated MW	49698

Additional Information

Gene ID	768
Other Names	G250; MN; Carbonic anhydrase 9; Carbonate dehydratase IX; Carbonic anhydrase IX; CA-IX; CAIX; Membrane antigen MN; P54/58N; Renal cell carcinoma-associated antigen G250; RCC-associated antigen G250; pMW1
Target/Specificity	Recognizes endogenous levels of Carbonic Anhydrase 9 protein.
Dilution	WB~~WB (1/500 - 1/1000)
Format	Liquid in 0.42% Potassium phosphate, 0.87% Sodium chloride, pH 7.3, 30% glycerol, and 0.09% (W/V) sodium azide.
Storage	Store at -20 °C.Stable for 12 months from date of receipt

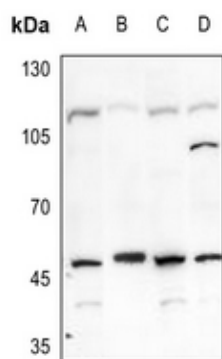
Protein Information

Name	CA9
Synonyms	G250, MN
Function	Catalyzes the interconversion between carbon dioxide and water and the dissociated ions of carbonic acid (i.e. bicarbonate and hydrogen ions).
Cellular Location	Nucleus. Nucleus, nucleolus. Cell membrane; Single-pass type I membrane protein. Cell projection, microvillus membrane; Single-pass type I membrane protein. Note=Found on the surface microvilli and in the nucleus, particularly in nucleolus
Tissue Location	Expressed primarily in carcinoma cells lines. Expression is restricted to very few normal tissues and the most abundant expression is found in the epithelial cells of gastric mucosa

Background

KLH-conjugated synthetic peptide encompassing a sequence within the center region of human Carbonic Anhydrase 9. The exact sequence is proprietary.

Images



Western blot analysis of Carbonic Anhydrase 9 expression in U2OS (A), mouse kidney (B), mouse brain (C), rat brain (D) whole cell lysates.

Please note: All products are 'FOR RESEARCH USE ONLY. NOT FOR USE IN DIAGNOSTIC OR THERAPEUTIC PROCEDURES'.