

Anti-CDC20 Antibody

Rabbit polyclonal antibody to CDC20

Catalog # AP59505

Product Information

Application	WB
Primary Accession	Q12834
Reactivity	Human, Mouse, Rat, Monkey, Pig
Host	Rabbit
Clonality	Polyclonal
Calculated MW	54723

Additional Information

Gene ID	991
Other Names	Cell division cycle protein 20 homolog; p55CDC
Target/Specificity	KLH-conjugated synthetic peptide encompassing a sequence within the center region of human CDC20. The exact sequence is proprietary.
Dilution	WB~~WB (1/500 - 1/1000), IH (1/100 - 1/200)
Format	Liquid in 0.42% Potassium phosphate, 0.87% Sodium chloride, pH 7.3, 30% glycerol, and 0.09% (W/V) sodium azide.
Storage	Store at -20 °C.Stable for 12 months from date of receipt

Protein Information

Name	CDC20
Function	<p>Substrate-specific adapter of the anaphase promoting complex/cyclosome (APC/C) complex that confers substrate specificity by binding to substrates and targeting them to the APC/C complex for ubiquitination and degradation (PubMed:9734353, PubMed:27030811, PubMed:29343641). Recognizes and binds the destruction box (D box) on protein substrates (PubMed:29343641). Involved in the metaphase/anaphase transition of cell cycle (PubMed:32666501). Is regulated by MAD2L1: in metaphase the MAD2L1-CDC20-APC/C ternary complex is inactive and in anaphase the CDC20-APC/C binary complex is active in degrading substrates (PubMed:9811605, PubMed:9637688). The CDC20-APC/C complex positively regulates the formation of synaptic vesicle clustering at active zone to the presynaptic membrane in postmitotic neurons (By similarity). CDC20-APC/C-induced degradation of NEUROD2 induces presynaptic differentiation (By similarity). The CDC20- APC/C complex promotes proper dilation formation and radial migration by degrading CCDC41 (By similarity).</p>

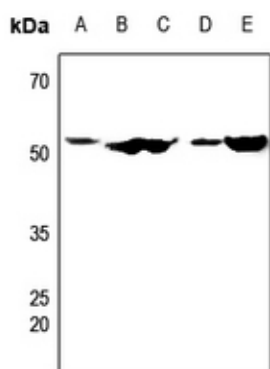
Cellular Location

Cytoplasm, cytoskeleton, microtubule organizing center, centrosome. Chromosome, centromere, kinetochore. Cytoplasm, cytoskeleton, spindle pole

Background

KLH-conjugated synthetic peptide encompassing a sequence within the center region of human CDC20. The exact sequence is proprietary.

Images



Western blot analysis of CDC20 expression in Hela (A), DLD (B), LOVO (C), mouse spleen (D), rat spleen (E) whole cell lysates.

Please note: All products are 'FOR RESEARCH USE ONLY. NOT FOR USE IN DIAGNOSTIC OR THERAPEUTIC PROCEDURES'.