

Anti-CLK2 Antibody

Rabbit polyclonal antibody to CLK2

Catalog # AP59517

Product Information

Application	WB, IHC
Primary Accession	P49760
Reactivity	Human, Monkey
Host	Rabbit
Clonality	Polyclonal
Calculated MW	60090

Additional Information

Gene ID	1196
Other Names	Dual specificity protein kinase CLK2; CDC-like kinase 2
Target/Specificity	Recognizes endogenous levels of CLK2 protein.
Dilution	WB~~WB (1/500 - 1/1000), IHC (1/100 - 1/200) IHC~~WB (1/500 - 1/1000), IHC (1/100 - 1/200)
Format	Liquid in 0.42% Potassium phosphate, 0.87% Sodium chloride, pH 7.3, 30% glycerol, and 0.09% (W/V) sodium azide.
Storage	Store at -20 °C.Stable for 12 months from date of receipt

Protein Information

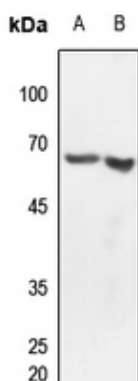
Name	CLK2
Function	Dual specificity kinase acting on both serine/threonine and tyrosine-containing substrates. Phosphorylates serine- and arginine- rich (SR) proteins of the spliceosomal complex. May be a constituent of a network of regulatory mechanisms that enable SR proteins to control RNA splicing and can cause redistribution of SR proteins from speckles to a diffuse nucleoplasmic distribution. Acts as a suppressor of hepatic gluconeogenesis and glucose output by repressing PPARGC1A transcriptional activity on gluconeogenic genes via its phosphorylation. Phosphorylates PPP2R5B thereby stimulating the assembly of PP2A phosphatase with the PPP2R5B-AKT1 complex leading to dephosphorylation of AKT1. Phosphorylates: PTPN1, SRSF1 and SRSF3. Regulates the alternative splicing of tissue factor (F3) pre-mRNA in endothelial cells. Phosphorylates PAGE4 at several serine and threonine residues and this phosphorylation attenuates the ability of PAGE4 to potentiate the transcriptional activator activity of JUN (PubMed: 28289210).

Cellular Location	Nucleus. [Isoform 2]: Nucleus speckle. Note=Co-localizes with serine- and arginine-rich (SR) proteins in the nuclear speckles
Tissue Location	Endothelial cells (PubMed:19168442). Expressed in androgen-dependent prostate cancer cells (PubMed:28289210)

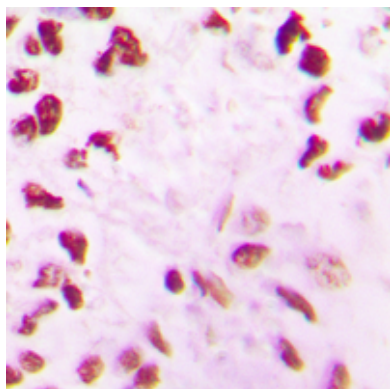
Background

KLH-conjugated synthetic peptide encompassing a sequence within the N-term region of human CLK2. The exact sequence is proprietary.

Images



Western blot analysis of CLK2 expression in HEK239T (A), HeLa (B) whole cell lysates.



Immunohistochemical analysis of CLK2 staining in human lung cancer formalin fixed paraffin embedded tissue section. The section was pre-treated using heat mediated antigen retrieval with sodium citrate buffer (pH 6.0). The section was then incubated with the antibody at room temperature and detected using an HRP conjugated compact polymer system. DAB was used as the chromogen. The section was then counterstained with haematoxylin and mounted with DPX.

Please note: All products are 'FOR RESEARCH USE ONLY. NOT FOR USE IN DIAGNOSTIC OR THERAPEUTIC PROCEDURES'.