

Anti-CLNS1A Antibody

Rabbit polyclonal antibody to CLNS1A

Catalog # AP59518

Product Information

Application	WB, IP
Primary Accession	P54105
Reactivity	Human, Mouse, Rat, Drosophila
Host	Rabbit
Clonality	Polyclonal
Calculated MW	26215

Additional Information

Gene ID	1207
Other Names	CLCI; ICLN; Methylosome subunit pICln; Chloride channel, nucleotide sensitive 1A; Chloride conductance regulatory protein ICln; I(ICln); Chloride ion current inducer protein; CLCI; Reticulocyte pICln
Target/Specificity	Recognizes endogenous levels of CLNS1A protein.
Dilution	WB~~WB (1/500 - 1/1000), IP (1/10 - 1/100) IP~~N/A
Format	Liquid in 0.42% Potassium phosphate, 0.87% Sodium chloride, pH 7.3, 30% glycerol, and 0.09% (W/V) sodium azide.
Storage	Store at -20 °C.Stable for 12 months from date of receipt

Protein Information

Name	CLNS1A
Synonyms	CLCI, ICLN
Function	Involved in both the assembly of spliceosomal snRNPs and the methylation of Sm proteins (PubMed: 10330151 , PubMed: 11713266 , PubMed: 18984161 , PubMed: 21081503). Chaperone that regulates the assembly of spliceosomal U1, U2, U4 and U5 small nuclear ribonucleoproteins (snRNPs), the building blocks of the spliceosome, and thereby plays an important role in the splicing of cellular pre- mRNAs (PubMed: 10330151 , PubMed: 18984161). Most spliceosomal snRNPs contain a common set of Sm proteins SNRPB, SNRPD1, SNRPD2, SNRPD3, SNRPE, SNRPF and SNRPG that assemble in a heptameric protein ring on the Sm site of the small nuclear RNA to form the core snRNP (Sm core) (PubMed: 10330151). In the cytosol, the Sm proteins SNRPD1, SNRPD2, SNRPE, SNRPF and SNRPG are trapped in an inactive 6S pICln-Sm complex by the chaperone CLNS1A that controls the assembly of the core

snRNP (PubMed:[10330151](#), PubMed:[18984161](#)). Dissociation by the SMN complex of CLNS1A from the trapped Sm proteins and their transfer to an SMN-Sm complex triggers the assembly of core snRNPs and their transport to the nucleus (PubMed:[10330151](#), PubMed:[18984161](#)).

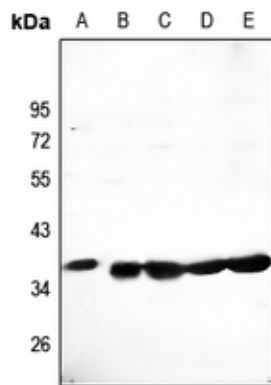
Cellular Location

Cytoplasm, cytosol. Nucleus. Cytoplasm, cytoskeleton. Note=A small fraction is also associated with the cytoskeleton (PubMed:18984161)

Background

KLH-conjugated synthetic peptide encompassing a sequence within the C-term region of human CLNS1A. The exact sequence is proprietary.

Images



Western blot analysis of CLNS1A expression in H9C2 (A), AML12 (B), Jurkat (C), HepG2 (D), A549 (E) whole cell lysates.

Please note: All products are 'FOR RESEARCH USE ONLY. NOT FOR USE IN DIAGNOSTIC OR THERAPEUTIC PROCEDURES'.