

Anti-CNPase Antibody

Rabbit polyclonal antibody to CNPase

Catalog # AP59520

Product Information

Application	WB, IP
Primary Accession	P09543
Other Accession	P16330
Reactivity	Human, Mouse, Rat, Monkey, SARS
Host	Rabbit
Clonality	Polyclonal
Calculated MW	47579

Additional Information

Gene ID	1267
Other Names	2', 3'-cyclic-nucleotide 3'-phosphodiesterase; CNP; CNPase
Target/Specificity	KLH-conjugated synthetic peptide encompassing a sequence within the center region of human CNPase. The exact sequence is proprietary.
Dilution	WB~~WB (1/500 - 1/1000), IP (1/10 - 1/100) IP~~N/A
Format	Liquid in 0.42% Potassium phosphate, 0.87% Sodium chloride, pH 7.3, 30% glycerol, and 0.09% (W/V) sodium azide.
Storage	Store at -20 °C.Stable for 12 months from date of receipt

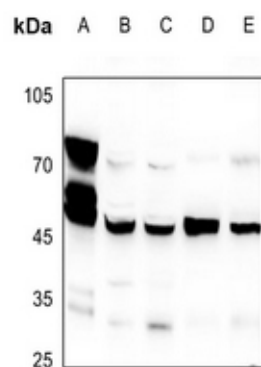
Protein Information

Name	CNP (HGNC:2158)
Function	Catalyzes the formation of 2'-nucleotide products from 2',3'- cyclic substrates (By similarity). May participate in RNA metabolism in the myelinating cell, CNP is the third most abundant protein in central nervous system myelin (By similarity).
Cellular Location	Membrane {ECO:0000250 UniProtKB:P16330}; Lipid- anchor {ECO:0000250 UniProtKB:P16330}. Melanosome. Note=Firmly bound to membrane structures of brain white matter. {ECO:0000250 UniProtKB:P16330}

Background

KLH-conjugated synthetic peptide encompassing a sequence within the center region of human CNPase. The exact sequence is proprietary.

Images



Western blot analysis of CNPase expression in mouse brain (A), PC12 (B), CT12 (C), SGC7901 (D), K562 (E) whole cell lysates.

Please note: All products are 'FOR RESEARCH USE ONLY. NOT FOR USE IN DIAGNOSTIC OR THERAPEUTIC PROCEDURES'.