

# Anti-CREB (pS121) Antibody

Rabbit polyclonal antibody to CREB (pS121)

Catalog # AP59523

## Product Information

Application	WB, IHC
Primary Accession	<a href="#">P16220</a>
Other Accession	<a href="#">Q01147</a>
Reactivity	Human, Mouse, Rat, Zebrafish, Pig, Chicken, Bovine, SARS
Host	Rabbit
Clonality	Polyclonal
Calculated MW	35136

## Additional Information

Gene ID	1385
Other Names	Cyclic AMP-responsive element-binding protein 1; CREB-1; cAMP-responsive element-binding protein 1
Target/Specificity	Recognizes endogenous levels of CREB (pS121) protein.
Dilution	WB~~WB (1/500 - 1/1000), IHC (1/100 - 1/200) IHC~~WB (1/500 - 1/1000), IHC (1/100 - 1/200)
Format	Liquid in 0.42% Potassium phosphate, 0.87% Sodium chloride, pH 7.3, 30% glycerol, and 0.09% (W/V) sodium azide.
Storage	Store at -20 °C.Stable for 12 months from date of receipt

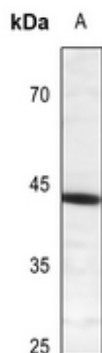
## Protein Information

Name	CREB1
Function	Phosphorylation-dependent transcription factor that stimulates transcription upon binding to the DNA cAMP response element (CRE), a sequence present in many viral and cellular promoters (By similarity). Transcription activation is enhanced by the TORC coactivators which act independently of Ser-119 phosphorylation (PubMed: <a href="#">14536081</a> ). Involved in different cellular processes including the synchronization of circadian rhythmicity and the differentiation of adipose cells (By similarity). Regulates the expression of apoptotic and inflammatory response factors in cardiomyocytes in response to ERFE-mediated activation of AKT signaling (By similarity).
Cellular Location	Nucleus {ECO:0000255   PROSITE-ProRule:PRU00312, ECO:0000255   PROSITE-ProRule:PRU00978, ECO:0000269   PubMed:12552083}

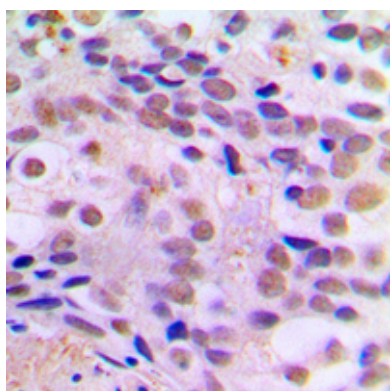
## Background

KLH-conjugated synthetic peptide encompassing a sequence within the center region of human CREB. The exact sequence is proprietary.

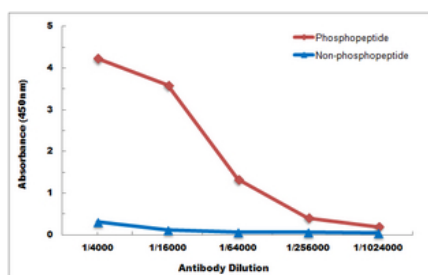
## Images



Western blot analysis of CREB (pS121) expression in DLD (A) whole cell lysates.



Immunohistochemical analysis of CREB (pS121) staining in human breast cancer formalin fixed paraffin embedded tissue section. The section was pre-treated using heat mediated antigen retrieval with sodium citrate buffer (pH 6.0). The section was then incubated with the antibody at room temperature and detected using an HRP conjugated compact polymer system. DAB was used as the chromogen. The section was then counterstained with haematoxylin and mounted with DPX.



Direct ELISA antibody dose-response curve using Anti-CREB (pS121) Antibody. Antigen (phosphopeptide and non-phosphopeptide) concentration is 5 ug/ml. Goat Anti-Rabbit IgG (H&L) - HRP was used as the secondary antibody, and signal was developed by TMB substrate.

Please note: All products are 'FOR RESEARCH USE ONLY. NOT FOR USE IN DIAGNOSTIC OR THERAPEUTIC PROCEDURES'.