

# Anti-CK1 gamma 3 Antibody

Rabbit polyclonal antibody to CK1 gamma 3

Catalog # AP59526

## Product Information

---

<b>Application</b>	WB
<b>Primary Accession</b>	<a href="#">Q9Y6M4</a>
<b>Other Accession</b>	<a href="#">Q8C4X2</a>
<b>Reactivity</b>	Human, Mouse, Rat, Monkey, Bovine
<b>Host</b>	Rabbit
<b>Clonality</b>	Polyclonal
<b>Calculated MW</b>	51389

## Additional Information

---

<b>Gene ID</b>	1456
<b>Other Names</b>	Casein kinase I isoform gamma-3; CKI-gamma 3
<b>Target/Specificity</b>	KLH-conjugated synthetic peptide encompassing a sequence within the C-term region of human CK1 gamma 3. The exact sequence is proprietary.
<b>Dilution</b>	WB~~WB (1/500 - 1/1000)
<b>Format</b>	Liquid in 0.42% Potassium phosphate, 0.87% Sodium chloride, pH 7.3, 30% glycerol, and 0.09% (W/V) sodium azide.
<b>Storage</b>	Store at -20 °C.Stable for 12 months from date of receipt

## Protein Information

---

<b>Name</b>	CSNK1G3
<b>Function</b>	Serine/threonine-protein kinase. Casein kinases are operationally defined by their preferential utilization of acidic proteins such as caseins as substrates. It can phosphorylate a large number of proteins. Participates in Wnt signaling. Regulates fast synaptic transmission mediated by glutamate (By similarity).
<b>Cellular Location</b>	Cytoplasm.

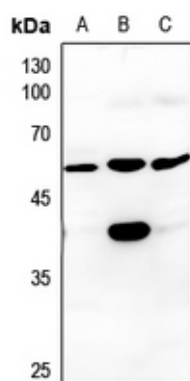
## Background

---

KLH-conjugated synthetic peptide encompassing a sequence within the C-term region of human CK1 gamma 3. The exact sequence is proprietary.

## Images

---



Western blot analysis of CK1 gamma 3 expression in mouse liver (A), rat testis (B), rat lung (C) whole cell lysates.

Please note: All products are 'FOR RESEARCH USE ONLY. NOT FOR USE IN DIAGNOSTIC OR THERAPEUTIC PROCEDURES'.