

Anti-Cardiotrophin-1 Antibody

Rabbit polyclonal antibody to Cardiotrophin-1

Catalog # AP59528

Product Information

Application	WB, IHC
Primary Accession	Q16619
Other Accession	Q60753
Reactivity	Human, Mouse, Rat, Monkey
Host	Rabbit
Clonality	Polyclonal
Calculated MW	21227

Additional Information

Gene ID	1489
Other Names	Cardiotrophin-1; CT-1
Target/Specificity	Recognizes endogenous levels of Cardiotrophin-1 protein.
Dilution	WB~~WB (1/500 - 1/1000), IHC (1/100 - 1/200) IHC~~WB (1/500 - 1/1000), IHC (1/100 - 1/200)
Format	Liquid in 0.42% Potassium phosphate, 0.87% Sodium chloride, pH 7.3, 30% glycerol, and 0.09% (W/V) sodium azide.
Storage	Store at -20 °C.Stable for 12 months from date of receipt

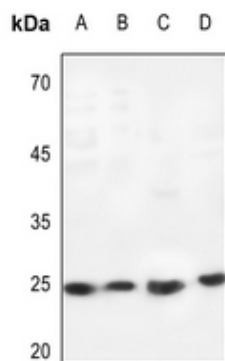
Protein Information

Name	CTF1
Function	Induces cardiac myocyte hypertrophy in vitro. Binds to and activates the ILST/gp130 receptor.
Cellular Location	Secreted.
Tissue Location	Highly expressed in heart, skeletal muscle, prostate and ovary. Lower levels in lung, kidney, pancreas, thymus, testis and small intestine. Little or no expression in brain, placenta, liver, spleen, colon or peripheral blood leukocytes

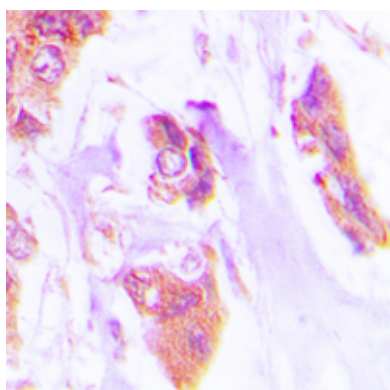
Background

KLH-conjugated synthetic peptide encompassing a sequence within the N-term region of human Cardiotrophin-1. The exact sequence is proprietary.

Images



Western blot analysis of Cardiotrophin-1 expression in Hela (A), mouse lung (B), rat lung (C), rat testis (D) whole cell lysates.



Immunohistochemical analysis of Cardiotrophin-1 staining in human lung cancer formalin fixed paraffin embedded tissue section. The section was pre-treated using heat mediated antigen retrieval with sodium citrate buffer (pH 6.0). The section was then incubated with the antibody at room temperature and detected using an HRP conjugated compact polymer system. DAB was used as the chromogen. The section was then counterstained with haematoxylin and mounted with DPX.

Please note: All products are 'FOR RESEARCH USE ONLY. NOT FOR USE IN DIAGNOSTIC OR THERAPEUTIC PROCEDURES'.