

Anti-Cathepsin V Antibody

Rabbit polyclonal antibody to Cathepsin V
Catalog # AP59529

Product Information

Application	WB
Primary Accession	O60911
Reactivity	Human, Mouse, Rat, Monkey
Host	Rabbit
Clonality	Polyclonal
Calculated MW	37329

Additional Information

Gene ID	1515
Other Names	CATL2; CTSL2; CTSU; Cathepsin L2; Cathepsin U; Cathepsin V
Target/Specificity	Recognizes endogenous levels of Cathepsin V protein.
Dilution	WB~~WB (1/500 - 1/1000)
Format	Liquid in 0.42% Potassium phosphate, 0.87% Sodium chloride, pH 7.3, 30% glycerol, and 0.09% (W/V) sodium azide.
Storage	Store at -20 °C.Stable for 12 months from date of receipt

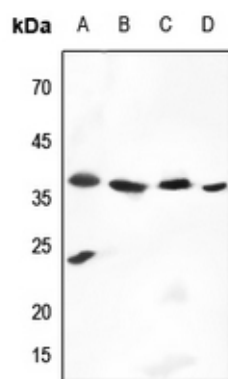
Protein Information

Name	CTSV
Synonyms	CATL2, CTSL2, CTSU
Function	Cysteine protease. May have an important role in corneal physiology.
Cellular Location	Lysosome.
Tissue Location	Predominantly expressed in the thymus and testis. Also expressed in corneal epithelium, and to a lesser extent in conjunctival epithelium and skin.

Background

KLH-conjugated synthetic peptide encompassing a sequence within the center region of human Cathepsin V. The exact sequence is proprietary.

Images



Western blot analysis of Cathepsin V expression in mouse lung (A), mouse testis (B), rat lung (C), rat testis (D) whole cell lysates.

Please note: All products are 'FOR RESEARCH USE ONLY. NOT FOR USE IN DIAGNOSTIC OR THERAPEUTIC PROCEDURES'.