

KIF9 Antibody (C-term)

Affinity Purified Rabbit Polyclonal Antibody (Pab)

Catalog # AP5953b

Product Information

Application	WB, IHC-P, E
Primary Accession	Q9HAQ2
Other Accession	NP_878905.2 , NP_001128350.1 , NP_071737.1
Reactivity	Human, Mouse
Host	Rabbit
Clonality	Polyclonal
Isotype	Rabbit IgG
Clone Names	RB27385
Calculated MW	89986
Antigen Region	581-609

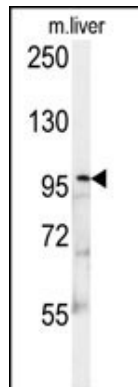
Additional Information

Gene ID	64147
Other Names	Kinesin-like protein KIF9, KIF9
Target/Specificity	This KIF9 antibody is generated from rabbits immunized with a KLH conjugated synthetic peptide between 581-609 amino acids from the C-terminal region of human KIF9.
Dilution	WB~~1:1000 IHC-P~~1:100~500 E~~Use at an assay dependent concentration.
Format	Purified polyclonal antibody supplied in PBS with 0.09% (W/V) sodium azide. This antibody is purified through a protein A column, followed by peptide affinity purification.
Storage	Maintain refrigerated at 2-8°C for up to 2 weeks. For long term storage store at -20°C in small aliquots to prevent freeze-thaw cycles.
Precautions	KIF9 Antibody (C-term) is for research use only and not for use in diagnostic or therapeutic procedures.

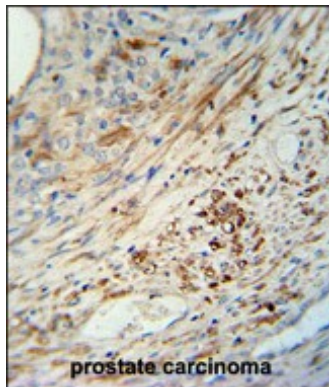
Protein Information

Name	KIF9
Function	Essential for normal male fertility and for progressive motility of spermatozoa.
Cellular Location	Cytoplasm, cytoskeleton. Cell projection, cilium, flagellum

Images



KIF9 Antibody (C-term) (Cat. #AP5953b) western blot analysis in mouse liver tissue lysates (15ug/lane). This demonstrates the KIF9 antibody detected KIF9 protein (arrow).



KIF9 antibody (C-term) (Cat. #AP5953b) immunohistochemistry analysis in formalin fixed and paraffin embedded human prostate carcinoma followed by peroxidase conjugation of the secondary antibody and DAB staining. This data demonstrates the use of the KIF9 antibody (C-term) for immunohistochemistry. Clinical relevance has not been evaluated.

Please note: All products are 'FOR RESEARCH USE ONLY. NOT FOR USE IN DIAGNOSTIC OR THERAPEUTIC PROCEDURES'.