

Anti-Factor II APII Antibody

Rabbit polyclonal antibody to Factor II APII
Catalog # AP59548

Product Information

Application	WB
Primary Accession	P00734
Other Accession	P19221
Reactivity	Human, Mouse, Rat
Host	Rabbit
Clonality	Polyclonal
Calculated MW	70037

Additional Information

Gene ID	2147
Other Names	Prothrombin; Coagulation factor II
Target/Specificity	KLH-conjugated synthetic peptide encompassing a sequence within the center region of human Factor II APII. The exact sequence is proprietary.
Dilution	WB~~WB (1/500 - 1/1000)
Format	Liquid in 0.42% Potassium phosphate, 0.87% Sodium chloride, pH 7.3, 30% glycerol, and 0.09% (W/V) sodium azide.
Storage	Store at -20 °C.Stable for 12 months from date of receipt

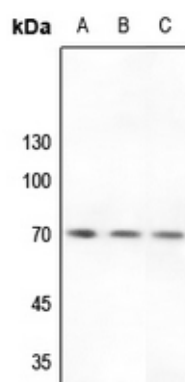
Protein Information

Name	F2
Function	Thrombin, which cleaves bonds after Arg and Lys, converts fibrinogen to fibrin and activates factors V, VII, VIII, XIII, and, in complex with thrombomodulin, protein C. Functions in blood homeostasis, inflammation and wound healing. Activates coagulation factor XI (F11); activation is promoted by the contact with negatively charged surfaces (PubMed: 2019570 , PubMed: 21976677). Triggers the production of pro- inflammatory cytokines, such as MCP-1/CCL2 and IL8/CXCL8, in endothelial cells (PubMed: 30568593 , PubMed: 9780208).
Cellular Location	Secreted, extracellular space.
Tissue Location	Expressed by the liver and secreted in plasma.

Background

KLH-conjugated synthetic peptide encompassing a sequence within the center region of human Factor II APII. The exact sequence is proprietary.

Images



Western blot analysis of Factor II APII expression in HEK293T (A), Hela (B), rat liver (C) whole cell lysates.

Please note: All products are 'FOR RESEARCH USE ONLY. NOT FOR USE IN DIAGNOSTIC OR THERAPEUTIC PROCEDURES'.