

# Anti-FR alpha Antibody

Rabbit polyclonal antibody to FR alpha  
Catalog # AP59557

## Product Information

Application	WB, IP
Primary Accession	<a href="#">P15328</a>
Reactivity	Human, Mouse, Rat, Monkey
Host	Rabbit
Clonality	Polyclonal
Calculated MW	29819

## Additional Information

Gene ID	2348
Other Names	FOLR; Folate receptor alpha; FR-alpha; Adult folate-binding protein; FBP; Folate receptor 1; Folate receptor, adult; KB cells FBP; Ovarian tumor-associated antigen MOv18
Target/Specificity	KLH-conjugated synthetic peptide encompassing a sequence within the center region of human FR alpha. The exact sequence is proprietary.
Dilution	WB~~WB (1/500 - 1/1000), IP (1/10 - 1/100) IP~~N/A
Format	Liquid in 0.42% Potassium phosphate, 0.87% Sodium chloride, pH 7.3, 30% glycerol, and 0.09% (W/V) sodium azide.
Storage	Store at -20 °C.Stable for 12 months from date of receipt

## Protein Information

Name	FOLR1
Synonyms	FOLR
Function	Binds to folate and reduced folic acid derivatives and mediates delivery of 5-methyltetrahydrofolate and folate analogs into the interior of cells (PubMed: <a href="#">19074442</a> , PubMed: <a href="#">23851396</a> , PubMed: <a href="#">23934049</a> , PubMed: <a href="#">2527252</a> , PubMed: <a href="#">8033114</a> , PubMed: <a href="#">8567728</a> ). Has high affinity for folate and folic acid analogs at neutral pH (PubMed: <a href="#">23851396</a> , PubMed: <a href="#">23934049</a> , PubMed: <a href="#">2527252</a> , PubMed: <a href="#">8033114</a> , PubMed: <a href="#">8567728</a> ). Exposure to slightly acidic pH after receptor endocytosis triggers a conformation change that strongly reduces its affinity for folates and mediates their release (PubMed: <a href="#">8567728</a> ). Required for normal embryonic development and normal cell proliferation (By similarity).

<b>Cellular Location</b>	Cell membrane; Lipid-anchor, GPI-anchor Apical cell membrane; Lipid-anchor, GPI- anchor Basolateral cell membrane; Lipid-anchor, GPI-like-anchor. Secreted Cytoplasmic vesicle. Cytoplasmic vesicle, clathrin-coated vesicle. Endosome. Note=Endocytosed into cytoplasmic vesicles and then recycled to the cell membrane
<b>Tissue Location</b>	Primarily expressed in tissues of epithelial origin. Expression is increased in malignant tissues. Expressed in kidney, lung and cerebellum. Detected in placenta and thymus epithelium.

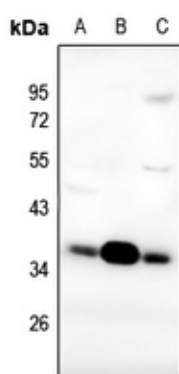
## Background

---

KLH-conjugated synthetic peptide encompassing a sequence within the center region of human FR alpha. The exact sequence is proprietary.

## Images

---



Western blot analysis of FR alpha expression in AML12 (A), PC12 (B), HepG2 (C) whole cell lysates.

Please note: All products are 'FOR RESEARCH USE ONLY. NOT FOR USE IN DIAGNOSTIC OR THERAPEUTIC PROCEDURES'.