

Anti-FYB Antibody

Rabbit polyclonal antibody to FYB

Catalog # AP59559

Product Information

Application	WB
Primary Accession	O15117
Reactivity	Human, Mouse, Rat
Host	Rabbit
Clonality	Polyclonal
Calculated MW	85387

Additional Information

Gene ID	2533
Other Names	SLAP130; FYN-binding protein; Adhesion and degranulation promoting adaptor protein; ADAP; FYB-120/130; p120/p130; FYN-T-binding protein; SLAP-130; SLP-76-associated phosphoprotein
Target/Specificity	Recognizes endogenous levels of FYB protein.
Dilution	WB~~WB (1/500 - 1/1000)
Format	Liquid in 0.42% Potassium phosphate, 0.87% Sodium chloride, pH 7.3, 30% glycerol, and 0.09% (W/V) sodium azide.
Storage	Store at -20 °C.Stable for 12 months from date of receipt

Protein Information

Name	FYB1 (HGNC:4036)
Synonyms	FYB, SLAP130
Function	Acts as an adapter protein of the FYN and LCP2 signaling cascades in T-cells (By similarity). May play a role in linking T-cell signaling to remodeling of the actin cytoskeleton (PubMed: 10747096 , PubMed: 16980616). Modulates the expression of IL2 (By similarity). Involved in platelet activation (By similarity). Prevents the degradation of SKAP1 and SKAP2 (PubMed: 15849195). May be involved in high affinity immunoglobulin epsilon receptor signaling in mast cells (By similarity).
Cellular Location	Cytoplasm. Nucleus {ECO:0000255 PROSITE-ProRule:PRU00768}. Cell junction {ECO:0000250 UniProtKB:O35601}. Note=Colocalizes with TMEM47 at cell-cell contacts in podocytes. {ECO:0000250 UniProtKB:O35601}

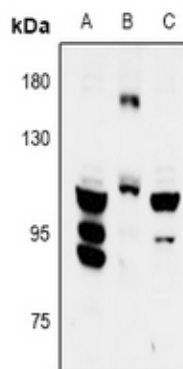
Tissue Location

Expressed in hematopoietic tissues such as myeloid and T-cells, spleen and thymus. Not expressed in B-cells, nor in non- lymphoid tissues

Background

KLH-conjugated synthetic peptide encompassing a sequence within the C-term region of human FYB. The exact sequence is proprietary.

Images



Western blot analysis of FYB expression in H9C2 (A), SP20 (B), PC3 (C) whole cell lysates.

Please note: All products are 'FOR RESEARCH USE ONLY. NOT FOR USE IN DIAGNOSTIC OR THERAPEUTIC PROCEDURES'.