

# Anti-GCLC Antibody

Rabbit polyclonal antibody to GCLC  
Catalog # AP59565

## Product Information

---

|                          |                                      |
|--------------------------|--------------------------------------|
| <b>Application</b>       | WB                                   |
| <b>Primary Accession</b> | <a href="#">P48506</a>               |
| <b>Other Accession</b>   | <a href="#">P97494</a>               |
| <b>Reactivity</b>        | Human, Mouse, Rat, Zebrafish, Bovine |
| <b>Host</b>              | Rabbit                               |
| <b>Clonality</b>         | Polyclonal                           |
| <b>Calculated MW</b>     | 72766                                |

## Additional Information

---

|                           |  |
|---------------------------|--|
| <b>Gene ID</b>            | 2729   |
| <b>Other Names</b>        | GLCL; GLCLC; Glutamate--cysteine ligase catalytic subunit; GCS heavy chain; Gamma-ECS; Gamma-glutamylcysteine synthetase |
| <b>Target/Specificity</b> | Recognizes endogenous levels of GCLC protein.  |
| <b>Dilution</b>           | WB~~WB (1/500 - 1/1000)  |
| <b>Format</b>             | Liquid in 0.42% Potassium phosphate, 0.87% Sodium chloride, pH 7.3, 30% glycerol, and 0.09% (W/V) sodium azide.          |
| <b>Storage</b>            | Store at -20 °C.Stable for 12 months from date of receipt  |

## Protein Information

---

|                 |   |
|-----------------|---|
| <b>Name</b>     | GCLC ( <a href="#">HGNC:4311</a> )  |
| <b>Synonyms</b> | GLCL, GLCLC   |
| <b>Function</b> | Catalyzes the ATP-dependent ligation of L-glutamate and L- cysteine and participates in the first and rate-limiting step in glutathione biosynthesis. |

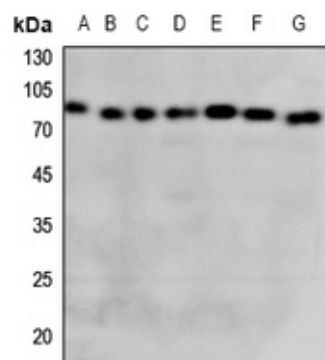
## Background

---

KLH-conjugated synthetic peptide encompassing a sequence within the center region of human GCLC. The exact sequence is proprietary.

## Images

---



Western blot analysis of GCLC expression in HEK293T (A), Hela (B), H460 (C), mouse lung (D), mouse liver (E), mouse kidney (F), rat liver (G) whole cell lysates.

Please note: All products are 'FOR RESEARCH USE ONLY. NOT FOR USE IN DIAGNOSTIC OR THERAPEUTIC PROCEDURES'.