

Anti-GNL1 Antibody

Rabbit polyclonal antibody to GNL1

Catalog # AP59566

Product Information

| | |
|--------------------------|--------------------------------|
| Application | WB, IP |
| Primary Accession | P36915 |
| Other Accession | P36916 |
| Reactivity | Human, Mouse, Rat, Monkey, Pig |
| Host | Rabbit |
| Clonality | Polyclonal |
| Calculated MW | 68661 |

Additional Information

| | |
|---------------------------|---|
| Gene ID | 2794 |
| Other Names | HSR1; Guanine nucleotide-binding protein-like 1; GTP-binding protein HSR1 |
| Target/Specificity | Recognizes endogenous levels of GNL1 protein. |
| Dilution | WB~~WB (1/500 - 1/1000), IP (1/10 - 1/100) IP~~N/A |
| Format | Liquid in 0.42% Potassium phosphate, 0.87% Sodium chloride, pH 7.3, 30% glycerol, and 0.09% (W/V) sodium azide. |
| Storage | Store at -20 °C.Stable for 12 months from date of receipt |

Protein Information

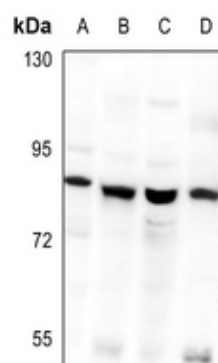
| | |
|-----------------|---|
| Name | GNL1 |
| Synonyms | HSR1 |
| Function | Possible regulatory or functional link with the histocompatibility cluster. |

Background

KLH-conjugated synthetic peptide encompassing a sequence within the N-term region of human GNL1. The exact sequence is proprietary.

Images

Western blot analysis of GNL1 expression in rat brain (A),



BV2 (B), PC12 (C), MCF7 (D) whole cell lysates.

Please note: All products are 'FOR RESEARCH USE ONLY. NOT FOR USE IN DIAGNOSTIC OR THERAPEUTIC PROCEDURES'.