

# Anti-mGLUR6 Antibody

Rabbit polyclonal antibody to mGLUR6

Catalog # AP59571

## Product Information

---

<b>Application</b>	WB, IF/IC
<b>Primary Accession</b>	<a href="#">Q15303</a>
<b>Other Accession</b>	<a href="#">Q5NCH9</a>
<b>Reactivity</b>	Human, Mouse, Rat
<b>Host</b>	Rabbit
<b>Clonality</b>	Polyclonal
<b>Calculated MW</b>	95468

## Additional Information

---

<b>Gene ID</b>	2916
<b>Other Names</b>	GPRC1F; MGLUR6; Metabotropic glutamate receptor 6; mGluR6
<b>Target/Specificity</b>	Recognizes endogenous levels of mGLUR6 protein.
<b>Dilution</b>	WB~~WB (1/500 - 1/1000), IF/IC (1/100 - 1/500) IF/IC~~N/A
<b>Format</b>	Liquid in 0.42% Potassium phosphate, 0.87% Sodium chloride, pH 7.3, 30% glycerol, and 0.09% (W/V) sodium azide.
<b>Storage</b>	Store at -20 °C.Stable for 12 months from date of receipt

## Protein Information

---

<b>Name</b>	GRM6
<b>Synonyms</b>	GPRC1F, MGLUR6
<b>Function</b>	G-protein coupled receptor for glutamate. Ligand binding causes a conformation change that triggers signaling via guanine nucleotide-binding proteins (G proteins) and modulates the activity of down-stream effectors, such as adenylate cyclase. Signaling inhibits adenylate cyclase activity (By similarity). Signaling stimulates TRPM1 channel activity and Ca(2+) uptake. Required for normal vision.
<b>Cellular Location</b>	Cell membrane; Multi-pass membrane protein. Endoplasmic reticulum membrane; Multi-pass membrane protein. Golgi apparatus membrane; Multi-pass membrane protein. Cell projection, dendrite Note=Subject to trafficking from the endoplasmic reticulum to the Golgi apparatus and then to the cell membrane

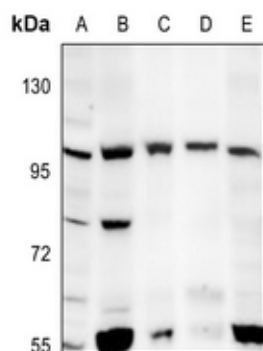
## Background

---

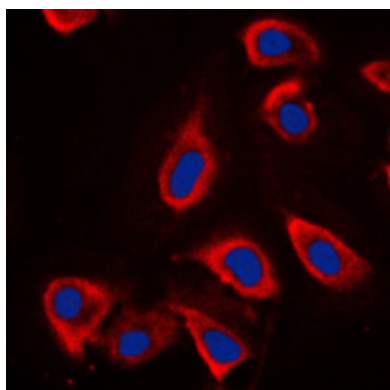
KLH-conjugated synthetic peptide encompassing a sequence within the C-term region of human mGLUR6. The exact sequence is proprietary.

## Images

---



Western blot analysis of mGLUR6 expression in C6 (A), SP20 (B), SHSY5Y (C), U87MG (D), A375 (E) whole cell lysates.



Immunofluorescent analysis of mGLUR6 staining in NIH3T3 cells. Formalin-fixed cells were permeabilized with 0.1% Triton X-100 in TBS for 5-10 minutes and blocked with 3% BSA-PBS for 30 minutes at room temperature. Cells were probed with the primary antibody in 3% BSA-PBS and incubated overnight at 4 °C in a humidified chamber. Cells were washed with PBST and incubated with a DyLight 594-conjugated secondary antibody (red) in PBS at room temperature in the dark. DAPI was used to stain the cell nuclei (blue).

Please note: All products are 'FOR RESEARCH USE ONLY. NOT FOR USE IN DIAGNOSTIC OR THERAPEUTIC PROCEDURES'.