

# Anti-HOXB4 Antibody

Rabbit polyclonal antibody to HOXB4

Catalog # AP59580

## Product Information

---

<b>Application</b>	WB
<b>Primary Accession</b>	<a href="#">P17483</a>
<b>Other Accession</b>	<a href="#">P10284</a>
<b>Reactivity</b>	Human, Mouse, Rat, Bovine
<b>Host</b>	Rabbit
<b>Clonality</b>	Polyclonal
<b>Calculated MW</b>	27604

## Additional Information

---

<b>Gene ID</b>	3214
<b>Other Names</b>	HOX2F; Homeobox protein Hox-B4; Homeobox protein Hox-2.6; Homeobox protein Hox-2F
<b>Target/Specificity</b>	KLH-conjugated synthetic peptide encompassing a sequence within the center region of human HOXB4. The exact sequence is proprietary.
<b>Dilution</b>	WB~~WB (1/500 - 1/1000)
<b>Format</b>	Liquid in 0.42% Potassium phosphate, 0.87% Sodium chloride, pH 7.3, 30% glycerol, and 0.09% (W/V) sodium azide.
<b>Storage</b>	Store at -20 °C.Stable for 12 months from date of receipt

## Protein Information

---

<b>Name</b>	HOXB4
<b>Synonyms</b>	HOX2F
<b>Function</b>	Sequence-specific transcription factor which is part of a developmental regulatory system that provides cells with specific positional identities on the anterior-posterior axis.
<b>Cellular Location</b>	Nucleus.

## Background

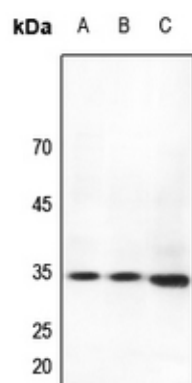
---

KLH-conjugated synthetic peptide encompassing a sequence within the center region of human HOXB4. The

exact sequence is proprietary.

## Images

---



Western blot analysis of HOXB4 expression in Hela (A), mouse lung (B), rat lung (C) whole cell lysates.

Please note: All products are 'FOR RESEARCH USE ONLY. NOT FOR USE IN DIAGNOSTIC OR THERAPEUTIC PROCEDURES'.