

Anti-IL-12B Antibody

Rabbit polyclonal antibody to IL-12B

Catalog # AP59589

Product Information

Application	WB
Primary Accession	P29460
Reactivity	Human
Host	Rabbit
Clonality	Polyclonal
Calculated MW	37169

Additional Information

Gene ID	3593
Other Names	NKSF2; Interleukin-12 subunit beta; IL-12B; Cytotoxic lymphocyte maturation factor 40 kDa subunit; CLMF p40; IL-12 subunit p40; NK cell stimulatory factor chain 2; NKSF2
Target/Specificity	KLH-conjugated synthetic peptide encompassing a sequence within the center region of human IL-12B. The exact sequence is proprietary.
Dilution	WB~~WB (1/500 - 1/1000)
Format	Liquid in 0.42% Potassium phosphate, 0.87% Sodium chloride, pH 7.3, 30% glycerol, and 0.09% (W/V) sodium azide.
Storage	Store at -20 °C.Stable for 12 months from date of receipt

Protein Information

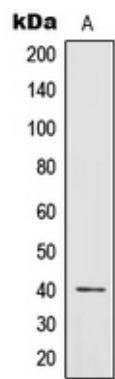
Name	IL12B
Synonyms	NKSF2
Function	Cytokine that can act as a growth factor for activated T and NK cells, enhance the lytic activity of NK/lymphokine-activated killer cells, and stimulate the production of IFN-gamma by resting PBMC.
Cellular Location	Secreted.

Background

KLH-conjugated synthetic peptide encompassing a sequence within the center region of human IL-12B. The

exact sequence is proprietary.

Images



Western blot analysis of IL-12B expression in human brain (A) whole cell lysates.

Please note: All products are 'FOR RESEARCH USE ONLY. NOT FOR USE IN DIAGNOSTIC OR THERAPEUTIC PROCEDURES'.