

# Anti-CD49c Antibody

Rabbit polyclonal antibody to CD49c  
Catalog # AP59593

## Product Information

---

Application	WB
Primary Accession	<a href="#">P26006</a>
Other Accession	<a href="#">Q62470</a>
Reactivity	Human, Mouse, Rat
Host	Rabbit
Clonality	Polyclonal
Calculated MW	116612

## Additional Information

---

Gene ID	3675
Other Names	MSK18; Integrin alpha-3; CD49 antigen-like family member C; FRP-2; Galactoprotein B3; GAPB3; VLA-3 subunit alpha; CD49c
Target/Specificity	Recognizes endogenous levels of CD49c protein.
Dilution	WB~~WB (1/500 - 1/1000)
Format	Liquid in 0.42% Potassium phosphate, 0.87% Sodium chloride, pH 7.3, 30% glycerol, and 0.09% (W/V) sodium azide.
Storage	Store at -20 °C.Stable for 12 months from date of receipt

## Protein Information

---

Name	ITGA3
Synonyms	MSK18
Function	Integrin alpha-3/beta-1 is a receptor for fibronectin, laminin, collagen, epiligrin, thrombospondin and CSPG4. Integrin alpha- 3/beta-1 provides a docking site for FAP (seprase) at invadopodia plasma membranes in a collagen-dependent manner and hence may participate in the adhesion, formation of invadopodia and matrix degradation processes, promoting cell invasion. Alpha-3/beta-1 may mediate with LGALS3 the stimulation by CSPG4 of endothelial cells migration.
Cellular Location	Cell membrane; Single-pass type I membrane protein. Cell membrane; Lipid-anchor. Cell projection, invadopodium membrane; Single-pass type I membrane protein. Cell projection, filopodium membrane; Single-pass type I membrane protein. Note=Enriched preferentially at invadopodia, cell

membrane protrusions that correspond to sites of cell invasion, in a collagen-dependent manner.

### Tissue Location

Isoform 1 is widely expressed. Isoform 2 is expressed in brain and heart. In brain, both isoforms are exclusively expressed on vascular smooth muscle cells, whereas in heart isoform 1 is strongly expressed on vascular smooth muscle cells, isoform 2 is detected only on endothelial vein cells.

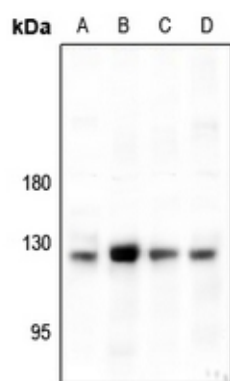
## Background

---

KLH-conjugated synthetic peptide encompassing a sequence within the center region of human CD49c. The exact sequence is proprietary.

## Images

---



Western blot analysis of CD49c expression in HepG2 (A), AML12 (B), PC12 (C), A549 (D) whole cell lysates.

Please note: All products are 'FOR RESEARCH USE ONLY. NOT FOR USE IN DIAGNOSTIC OR THERAPEUTIC PROCEDURES'.