

Anti-Cofilin (pS3) Antibody

Rabbit polyclonal antibody to Cofilin (pS3)

Catalog # AP59597

Product Information

Application	WB, IF/IC, IHC
Primary Accession	P23528
Other Accession	P18760
Reactivity	Human, Mouse, Rat, Monkey, Pig, Bovine, SARS
Host	Rabbit
Clonality	Polyclonal
Calculated MW	18502

Additional Information

Gene ID	1072
Other Names	CFL; Cofilin-1; 18 kDa phosphoprotein; p18; Cofilin, non-muscle isoform
Target/Specificity	Recognizes endogenous levels of Cofilin (pS3) protein.
Dilution	WB~~WB (1/500 - 1/1000), IHC (1/100 - 1/200), IF/IC (1/100 - 1/500) IF/IC~~N/A IHC~~WB (1/500 - 1/1000), IHC (1/100 - 1/200), IF/IC (1/100 - 1/500)
Format	Liquid in 0.42% Potassium phosphate, 0.87% Sodium chloride, pH 7.3, 30% glycerol, and 0.09% (W/V) sodium azide.
Storage	Store at -20 °C.Stable for 12 months from date of receipt

Protein Information

Name	CFL1
Synonyms	CFL
Function	Binds to F-actin and exhibits pH-sensitive F-actin depolymerizing activity (PubMed: 11812157). In conjunction with the subcortical maternal complex (SCMC), plays an essential role for zygotes to progress beyond the first embryonic cell divisions via regulation of actin dynamics (PubMed: 15580268). Required for the centralization of the mitotic spindle and symmetric division of zygotes (By similarity). Plays a role in the regulation of cell morphology and cytoskeletal organization in epithelial cells (PubMed: 21834987). Required for the up-regulation of atypical chemokine receptor ACKR2 from endosomal compartment to cell membrane, increasing its efficiency in chemokine uptake and degradation (PubMed: 23633677). Required for neural tube morphogenesis and neural crest cell migration (By similarity).

Cellular Location

Nucleus matrix. Cytoplasm, cytoskeleton. Cell projection, ruffle membrane; Peripheral membrane protein; Cytoplasmic side. Cell projection, lamellipodium membrane; Peripheral membrane protein; Cytoplasmic side. Cell projection, lamellipodium {ECO:0000250|UniProtKB:P18760}. Cell projection, growth cone {ECO:0000250|UniProtKB:P18760}. Cell projection, axon {ECO:0000250|UniProtKB:P18760}. Note=Colocalizes with the actin cytoskeleton in membrane ruffles and lamellipodia. Detected at the cleavage furrow and contractile ring during cytokinesis. Almost completely in nucleus in cells exposed to heat shock or 10% dimethyl sulfoxide

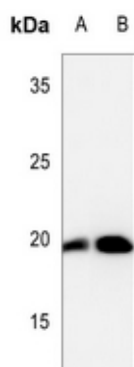
Tissue Location

Widely distributed in various tissues.

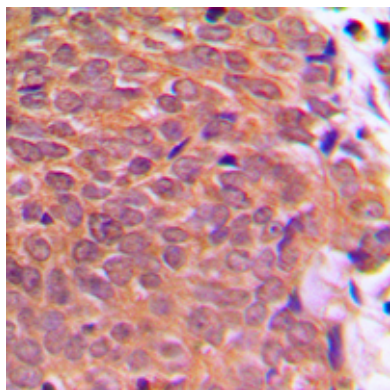
Background

KLH-conjugated synthetic peptide encompassing a sequence within the N-term region of human Cofilin. The exact sequence is proprietary.

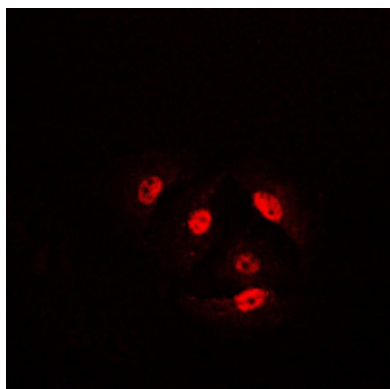
Images



Western blot analysis of Cofilin (pS3) expression in DLD (A), A375 (B) whole cell lysates.



Immunohistochemical analysis of Cofilin (pS3) staining in human breast cancer formalin fixed paraffin embedded tissue section. The section was pre-treated using heat mediated antigen retrieval with sodium citrate buffer (pH 6.0). The section was then incubated with the antibody at room temperature and detected using an HRP conjugated compact polymer system. DAB was used as the chromogen. The section was then counterstained with haematoxylin and mounted with DPX.



Immunofluorescent analysis of Cofilin (pS3) staining in HeLa cells. Formalin-fixed cells were permeabilized with 0.1% Triton X-100 in TBS for 5-10 minutes and blocked with 3% BSA-PBS for 30 minutes at room temperature. Cells were probed with the primary antibody in 3% BSA-PBS and incubated overnight at 4 °C in a humidified chamber. Cells were washed with PBST and incubated with a DyLight 594-conjugated secondary antibody (red) in PBS at room temperature in the dark.

Please note: All products are 'FOR RESEARCH USE ONLY. NOT FOR USE IN DIAGNOSTIC OR THERAPEUTIC PROCEDURES'.