

# Anti-TNF beta Antibody

Rabbit polyclonal antibody to TNF beta

Catalog # AP59610

## Product Information

---

Application	WB
Primary Accession	<a href="#">P01374</a>
Reactivity	Human, Mouse, Rat
Host	Rabbit
Clonality	Polyclonal
Calculated MW	22297

## Additional Information

---

Gene ID	4049
Other Names	TNFB; TNFSF1; Lymphotoxin-alpha; LT-alpha; TNF-beta; Tumor necrosis factor ligand superfamily member 1
Target/Specificity	Recognizes endogenous levels of TNF beta protein.
Dilution	WB~~WB (1/500 - 1/1000)
Format	Liquid in 0.42% Potassium phosphate, 0.87% Sodium chloride, pH 7.3, 30% glycerol, and 0.09% (W/V) sodium azide.
Storage	Store at -20 °C.Stable for 12 months from date of receipt

## Protein Information

---

Name	LTA
Synonyms	TNFB, TNFSF1
Function	Cytokine that in its homotrimeric form binds to TNFRSF1A/TNFR1, TNFRSF1B/TNFR and TNFRSF14/HVEM (PubMed: <a href="#">9462508</a> ). In its heterotrimeric form with LTB binds to TNFRSF3/LTBR (PubMed: <a href="#">24248355</a> ). Lymphotoxin is produced by lymphocytes and is cytotoxic for a wide range of tumor cells in vitro and in vivo.
Cellular Location	Secreted. Membrane. Note=The homotrimer is secreted. The heterotrimer is membrane-associated

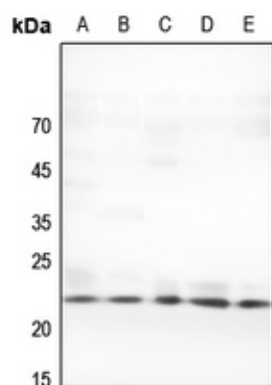
## Background

---

KLH-conjugated synthetic peptide encompassing a sequence within the center region of human TNF beta. The exact sequence is proprietary.

## Images

---



Western blot analysis of TNF beta expression in HEK293T (A), Hela (B), mouse testis (C), rat spleen (D), rat testis (E) whole cell lysates.

Please note: All products are 'FOR RESEARCH USE ONLY. NOT FOR USE IN DIAGNOSTIC OR THERAPEUTIC PROCEDURES'.