

# Anti-SMAD6 Antibody

Rabbit polyclonal antibody to SMAD6

Catalog # AP59616

## Product Information

Application	WB, IHC
Primary Accession	<a href="#">O43541</a>
Other Accession	<a href="#">O35182</a>
Reactivity	Human, Mouse, Rat
Host	Rabbit
Clonality	Polyclonal
Calculated MW	53497

## Additional Information

Gene ID	4091
Other Names	MADH6; Mothers against decapentaplegic homolog 6; MAD homolog 6; Mothers against DPP homolog 6; SMAD family member 6; SMAD 6; Smad6; hSMAD6
Target/Specificity	Recognizes endogenous levels of SMAD6 protein.
Dilution	WB~~WB (1/500 - 1/1000), IHC (1/100 - 1/200) IHC~~WB (1/500 - 1/1000), IHC (1/100 - 1/200)
Format	Liquid in 0.42% Potassium phosphate, 0.87% Sodium chloride, pH 7.3, 30% glycerol, and 0.09% (W/V) sodium azide.
Storage	Store at -20 °C.Stable for 12 months from date of receipt

## Protein Information

Name	SMAD6
Synonyms	MADH6
Function	Transforming growth factor-beta superfamily receptors signaling occurs through the Smad family of intracellular mediators. SMAD6 is an inhibitory Smad (i-Smad) that negatively regulates signaling downstream of type I transforming growth factor-beta (PubMed: <a href="#">10647776</a> , PubMed: <a href="#">10708948</a> , PubMed: <a href="#">10708949</a> , PubMed: <a href="#">16951688</a> , PubMed: <a href="#">22275001</a> , PubMed: <a href="#">30848080</a> , PubMed: <a href="#">9436979</a> , PubMed: <a href="#">9759503</a> ). Acts as a mediator of TGF-beta and BMP anti-inflammatory activities. Suppresses IL1R-TLR signaling through its direct interaction with PEL1, preventing NF-kappa-B activation, nuclear transport and NF-kappa-B- mediated expression of pro-inflammatory genes (PubMed: <a href="#">16951688</a> ). Blocks the BMP-SMAD1

signaling pathway by competing with SMAD4 for receptor- activated SMAD1-binding (PubMed:[30848080](#), PubMed:[9436979](#)). Binds to regulatory elements in target promoter regions (PubMed:[16491121](#)).

**Cellular Location**

Nucleus.

**Tissue Location**

[Isoform B]: Expressed in the brain, heart, ovary, peripheral blood leukocytes, small intestine, spleen, thymus, bone marrow, fetal liver and lymph nodes.

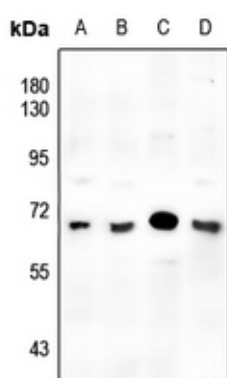
## Background

---

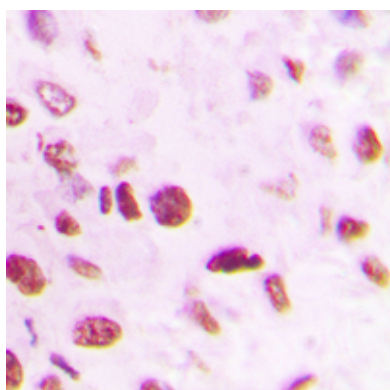
KLH-conjugated synthetic peptide encompassing a sequence within the center region of human SMAD6. The exact sequence is proprietary.

## Images

---



Western blot analysis of SMAD6 expression in A549 (A), PC3 (B), CT26 (C), H9C2 (D) whole cell lysates.



Immunohistochemical analysis of SMAD6 staining in human lung cancer formalin fixed paraffin embedded tissue section. The section was pre-treated using heat mediated antigen retrieval with sodium citrate buffer (pH 6.0). The section was then incubated with the antibody at room temperature and detected using an HRP conjugated compact polymer system. DAB was used as the chromogen. The section was then counterstained with haematoxylin and mounted with DPX.

Please note: All products are 'FOR RESEARCH USE ONLY. NOT FOR USE IN DIAGNOSTIC OR THERAPEUTIC PROCEDURES'.