

# Anti-MAZ Antibody

Rabbit polyclonal antibody to MAZ  
Catalog # AP59620

## Product Information

---

Application	WB
Primary Accession	<a href="#">P56270</a>
Other Accession	<a href="#">P56671</a>
Reactivity	Human, Mouse, Rat
Host	Rabbit
Clonality	Polyclonal
Calculated MW	48608

## Additional Information

---

Gene ID	4150
Other Names	ZNF801; Myc-associated zinc finger protein; MAZI; Pur-1; Purine-binding transcription factor; Serum amyloid A-activating factor-1; SAF-1; Transcription factor Zif87; ZF87; Zinc finger protein 801
Target/Specificity	KLH-conjugated synthetic peptide encompassing a sequence within the center region of human MAZ. The exact sequence is proprietary.
Dilution	WB~~WB (1/500 - 1/1000)
Format	Liquid in 0.42% Potassium phosphate, 0.87% Sodium chloride, pH 7.3, 30% glycerol, and 0.09% (W/V) sodium azide.
Storage	Store at -20 °C.Stable for 12 months from date of receipt

## Protein Information

---

Name	MAZ
Synonyms	ZNF801
Function	Transcriptional regulator, potentially with dual roles in transcription initiation and termination.
Cellular Location	Nucleus. Note=In brains of Alzheimer disease patients, present in a plaque-like structures
Tissue Location	Present in kidney, liver and brain. In the brain, highest levels are found in motor cortex and midfrontal cortex (at protein level).

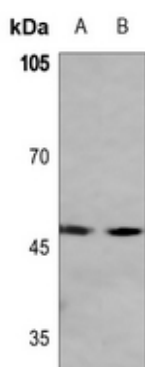
## Background

---

KLH-conjugated synthetic peptide encompassing a sequence within the center region of human MAZ. The exact sequence is proprietary.

## Images

---



Western blot analysis of MAZ expression in PC12 (A), rat lung (B) whole cell lysates.

Please note: All products are 'FOR RESEARCH USE ONLY. NOT FOR USE IN DIAGNOSTIC OR THERAPEUTIC PROCEDURES'.