

# Anti-MMP7 Antibody

Rabbit polyclonal antibody to MMP7

Catalog # AP59623

## Product Information

---

<b>Application</b>	WB, IHC
<b>Primary Accession</b>	<a href="#">P09237</a>
<b>Reactivity</b>	Human, Mouse, Rat, Monkey
<b>Host</b>	Rabbit
<b>Clonality</b>	Polyclonal
<b>Calculated MW</b>	29677

## Additional Information

---

<b>Gene ID</b>	4316
<b>Other Names</b>	MPSL1; PUMP1; Matrilysin; Matrin; Matrix metalloproteinase-7; MMP-7; Pump-1 protease; Uterine metalloproteinase
<b>Target/Specificity</b>	Recognizes endogenous levels of MMP7 protein.
<b>Dilution</b>	WB~~WB (1/500 - 1/1000), IHC (1/100 - 1/200) IHC~~WB (1/500 - 1/1000), IHC (1/100 - 1/200)
<b>Format</b>	Liquid in 0.42% Potassium phosphate, 0.87% Sodium chloride, pH 7.3, 30% glycerol, and 0.09% (W/V) sodium azide.
<b>Storage</b>	Store at -20 °C.Stable for 12 months from date of receipt

## Protein Information

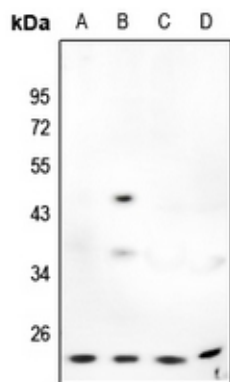
---

<b>Name</b>	MMP7
<b>Synonyms</b>	MPSL1, PUMP1
<b>Function</b>	Degrades casein, gelatins of types I, III, IV, and V, and fibronectin. Activates procollagenase.
<b>Cellular Location</b>	Secreted, extracellular space, extracellular matrix

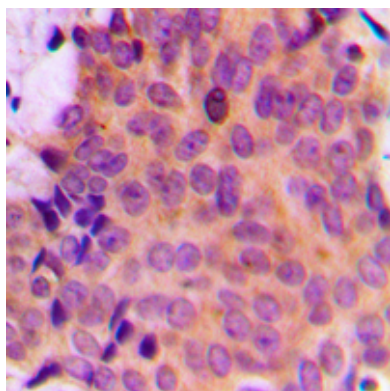
## Background

---

KLH-conjugated synthetic peptide encompassing a sequence within the C-term region of human MMP7. The exact sequence is proprietary.



Western blot analysis of MMP7 expression in A375 (A), A549 (B), PMVEC (C), mouse lung (D) whole cell lysates.



Immunohistochemical analysis of MMP7 staining in human breast cancer formalin fixed paraffin embedded tissue section. The section was pre-treated using heat mediated antigen retrieval with sodium citrate buffer (pH 6.0). The section was then incubated with the antibody at room temperature and detected using an HRP conjugated compact polymer system. DAB was used as the chromogen. The section was then counterstained with haematoxylin and mounted with DPX.

Please note: All products are 'FOR RESEARCH USE ONLY. NOT FOR USE IN DIAGNOSTIC OR THERAPEUTIC PROCEDURES'.