

Anti-MMP12 Antibody

Rabbit polyclonal antibody to MMP12

Catalog # AP59624

Product Information

Application	WB
Primary Accession	P39900
Reactivity	Human
Host	Rabbit
Clonality	Polyclonal
Calculated MW	54002

Additional Information

Gene ID	4321
Other Names	HME; Macrophage metalloelastase; MME; Macrophage elastase; ME; hME; Matrix metalloproteinase-12; MMP-12
Target/Specificity	Recognizes endogenous levels of MMP12 protein.
Dilution	WB~~WB (1/500 - 1/1000)
Format	Liquid in 0.42% Potassium phosphate, 0.87% Sodium chloride, pH 7.3, 30% glycerol, and 0.09% (W/V) sodium azide.
Storage	Store at -20 °C.Stable for 12 months from date of receipt

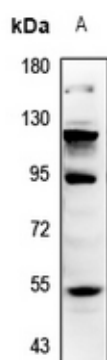
Protein Information

Name	MMP12
Synonyms	HME
Function	May be involved in tissue injury and remodeling. Has significant elastolytic activity. Can accept large and small amino acids at the P1' site, but has a preference for leucine. Aromatic or hydrophobic residues are preferred at the P1 site, with small hydrophobic residues (preferably alanine) occupying P3.
Cellular Location	Secreted, extracellular space, extracellular matrix
Tissue Location	Found in alveolar macrophages but not in peripheral blood monocytes

Background

KLH-conjugated synthetic peptide encompassing a sequence within the center region of human MMP12. The exact sequence is proprietary.

Images



Western blot analysis of MMP12 expression in HEK293T (A) whole cell lysates.

Please note: All products are 'FOR RESEARCH USE ONLY. NOT FOR USE IN DIAGNOSTIC OR THERAPEUTIC PROCEDURES'.