

# Anti-Myotubularin Antibody

Rabbit polyclonal antibody to Myotubularin  
Catalog # AP59627

## Product Information

---

Application	WB
Primary Accession	<a href="#">Q13496</a>
Other Accession	<a href="#">Q9Z2C5</a>
Reactivity	Human, Mouse, Rat
Host	Rabbit
Clonality	Polyclonal
Calculated MW	69932

## Additional Information

---

Gene ID	4534
Other Names	CG2; Myotubularin
Target/Specificity	Recognizes endogenous levels of Myotubularin protein.
Dilution	WB~~WB (1/500 - 1/1000)
Format	Liquid in 0.42% Potassium phosphate, 0.87% Sodium chloride, pH 7.3, 30% glycerol, and 0.09% (W/V) sodium azide.
Storage	Store at -20 °C.Stable for 12 months from date of receipt

## Protein Information

---

Name	MTM1 ( <a href="#">HGNC:7448</a> )
Synonyms	CG2
Function	Lipid phosphatase which dephosphorylates phosphatidylinositol 3-monophosphate (PI3P) and phosphatidylinositol 3,5-bisphosphate (PI(3,5)P2) (PubMed: <a href="#">10900271</a> , PubMed: <a href="#">11001925</a> , PubMed: <a href="#">12646134</a> , PubMed: <a href="#">14722070</a> ). Has also been shown to dephosphorylate phosphotyrosine- and phosphoserine-containing peptides (PubMed: <a href="#">9537414</a> ). Negatively regulates EGFR degradation through regulation of EGFR trafficking from the late endosome to the lysosome (PubMed: <a href="#">14722070</a> ). Plays a role in vacuolar formation and morphology. Regulates desmin intermediate filament assembly and architecture (PubMed: <a href="#">21135508</a> ). Plays a role in mitochondrial morphology and positioning (PubMed: <a href="#">21135508</a> ). Required for skeletal muscle maintenance but not for myogenesis (PubMed: <a href="#">21135508</a> ). In skeletal muscles, stabilizes MTMR12 protein levels (PubMed: <a href="#">23818870</a> ).

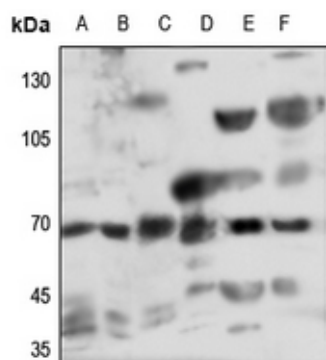
## Cellular Location

Cytoplasm. Cell membrane; Peripheral membrane protein. Cell projection, filopodium. Cell projection, ruffle. Late endosome. Cytoplasm, myofibril, sarcomere {ECO:0000250|UniProtKB:Q9Z2C5}. Note=Localizes as a dense cytoplasmic network (PubMed:11001925). Also localizes to the plasma membrane, including plasma membrane extensions such as filopodia and ruffles (PubMed:12118066). Predominantly located in the cytoplasm following interaction with MTMR12 (PubMed:12847286). Recruited to the late endosome following EGF stimulation (PubMed:14722070). In skeletal muscles, co-localizes with MTMR12 in the sarcomere (By similarity) {ECO:0000250|UniProtKB:Q9Z2C5, ECO:0000269|PubMed:11001925, ECO:0000269|PubMed:12118066, ECO:0000269|PubMed:12847286, ECO:0000269|PubMed:14722070}

## Background

KLH-conjugated synthetic peptide encompassing a sequence within the center region of human Myotubularin. The exact sequence is proprietary.

## Images



Western blot analysis of Myotubularin expression in HEK293T (A), Hela (B), LOVO (C), mouse liver (D), mouse muscle (E), rat muscle (F) whole cell lysates.

Please note: All products are 'FOR RESEARCH USE ONLY. NOT FOR USE IN DIAGNOSTIC OR THERAPEUTIC PROCEDURES'.