

# Anti-MX2 Antibody

Rabbit polyclonal antibody to MX2

Catalog # AP59628

## Product Information

---

Application	WB
Primary Accession	<a href="#">P20592</a>
Other Accession	<a href="#">Q9WVP9</a>
Reactivity	Human, Mouse, Rat, Monkey
Host	Rabbit
Clonality	Polyclonal
Calculated MW	82089

## Additional Information

---

Gene ID	4600
Other Names	Interferon-induced GTP-binding protein Mx2; Interferon-regulated resistance GTP-binding protein MxB; Myxovirus resistance protein 2; p78-related protein
Target/Specificity	Recognizes endogenous levels of MX2 protein.
Dilution	WB~~WB (1/500 - 1/1000)
Format	Liquid in 0.42% Potassium phosphate, 0.87% Sodium chloride, pH 7.3, 30% glycerol, and 0.09% (W/V) sodium azide.
Storage	Store at -20 °C.Stable for 12 months from date of receipt

## Protein Information

---

Name	MX2
Function	Interferon-induced dynamin-like GTPase with potent antiviral activity against human immunodeficiency virus type 1 (HIV-1). Acts by targeting the viral capsid and affects the nuclear uptake and/or stability of the HIV-1 replication complex and the subsequent chromosomal integration of the proviral DNA. Exhibits antiviral activity also against simian immunodeficiency virus (SIV-mnd). May play a role in regulating nucleocytoplasmic transport and cell-cycle progression.
Cellular Location	Cytoplasm. Nucleus. Nucleus, nuclear pore complex. Note=Localization to nuclear pores requires GTP-binding

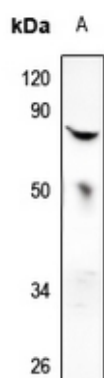
## Background

---

KLH-conjugated synthetic peptide encompassing a sequence within the center region of human MX2. The exact sequence is proprietary.

## Images

---



Western blot analysis of MX2 expression in HEK293T (A) whole cell lysates.

Please note: All products are 'FOR RESEARCH USE ONLY. NOT FOR USE IN DIAGNOSTIC OR THERAPEUTIC PROCEDURES'.