

Anti-NEDD8 Antibody

Rabbit polyclonal antibody to NEDD8

Catalog # AP59634

Product Information

Application	WB, IP, IHC
Primary Accession	Q15843
Other Accession	P29595
Reactivity	Human, Mouse, Rat, Rabbit, Bovine, Drosophila
Host	Rabbit
Clonality	Polyclonal
Calculated MW	9072

Additional Information

Gene ID	4738
Other Names	NEDD8; Neddylin; Neural precursor cell expressed developmentally down-regulated protein 8; NEDD-8; Ubiquitin-like protein Nedd8
Target/Specificity	Recognizes endogenous levels of NEDD8 protein.
Dilution	WB~~WB (1/500 - 1/1000), IHC (1/100 - 1/200), IP (1/10 - 1/100) IP~~N/A IHC~~WB (1/500 - 1/1000), IHC (1/100 - 1/200), IP (1/10 - 1/100)
Format	Liquid in 0.42% Potassium phosphate, 0.87% Sodium chloride, pH 7.3, 30% glycerol, and 0.09% (W/V) sodium azide.
Storage	Store at -20 °C.Stable for 12 months from date of receipt

Protein Information

Name	NEDD8 {ECO:0000303 PubMed:9694792, ECO:0000312 HGNC:HGNC:7732}
Function	Ubiquitin-like protein which plays an important role in cell cycle control and embryogenesis via its conjugation to a limited number of cellular proteins, such as cullins or p53/TP53 (PubMed: 10318914 , PubMed: 10597293 , PubMed: 11953428 , PubMed: 14690597 , PubMed: 15242646 , PubMed: 9694792 , PubMed: 38605244 , PubMed: 38316879). Attachment of NEDD8 to cullins is critical for the recruitment of E2 to the cullin-RING- based E3 ubiquitin-protein ligase complex, thus facilitating polyubiquitination and proteasomal degradation of cyclins and other regulatory proteins (PubMed: 10318914 , PubMed: 10597293 , PubMed: 11953428 , PubMed: 20688984 , PubMed: 9694792 , PubMed: 38605244 , PubMed: 38316879). Attachment of NEDD8 to p53/TP53 inhibits p53/TP53 transcriptional activity (PubMed: 15242646). Covalent attachment to its substrates requires prior activation by the E1 complex UBE1C-APPBP1 and

linkage to the E2 enzyme UBE2M (PubMed:[14690597](#)).

Cellular Location

Nucleus. Note=Mainly nuclear.

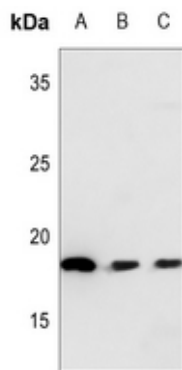
Tissue Location

Highly expressed in heart, skeletal muscle, spleen, thymus, prostate, testis, ovary, colon and leukocytes

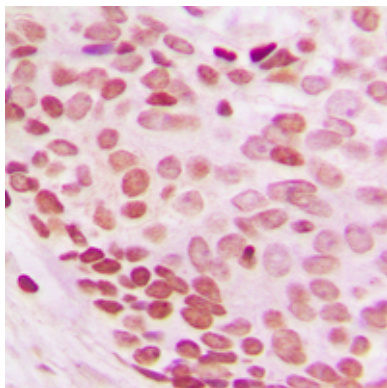
Background

KLH-conjugated synthetic peptide encompassing a sequence within the N-term region of human NEDD8. The exact sequence is proprietary.

Images



Western blot analysis of NEDD8 expression in mouse kidney (A), mouse testis (B), rat kidney (C) whole cell lysates.



Immunohistochemical analysis of NEDD8 staining in human breast cancer formalin fixed paraffin embedded tissue section. The section was pre-treated using heat mediated antigen retrieval with sodium citrate buffer (pH 6.0). The section was then incubated with the antibody at room temperature and detected using an HRP conjugated compact polymer system. DAB was used as the chromogen. The section was then counterstained with haematoxylin and mounted with DPX.

Please note: All products are 'FOR RESEARCH USE ONLY. NOT FOR USE IN DIAGNOSTIC OR THERAPEUTIC PROCEDURES'.