

Anti-IKB beta Antibody

Rabbit polyclonal antibody to IKB beta
Catalog # AP59638

Product Information

Application	WB
Primary Accession	Q15653
Other Accession	Q60778
Reactivity	Human, Mouse, Rat, Bovine
Host	Rabbit
Clonality	Polyclonal
Calculated MW	37771

Additional Information

Gene ID	4793
Other Names	IKBB; TRIP9; NF-kappa-B inhibitor beta; NF-kappa-BIB; I-kappa-B-beta; Ikb-B; Ikb-beta; IkappaBbeta; Thyroid receptor-interacting protein 9; TR-interacting protein 9; TRIP-9
Target/Specificity	Recognizes endogenous levels of IKB beta protein.
Dilution	WB~~WB (1/500 - 1/1000)
Format	Liquid in 0.42% Potassium phosphate, 0.87% Sodium chloride, pH 7.3, 30% glycerol, and 0.09% (W/V) sodium azide.
Storage	Store at -20 °C.Stable for 12 months from date of receipt

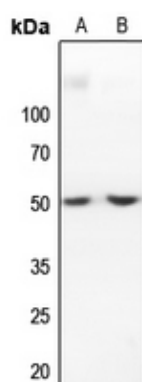
Protein Information

Name	NFKBIB
Synonyms	IKBB, TRIP9
Function	Inhibits NF-kappa-B by complexing with and trapping it in the cytoplasm. However, the unphosphorylated form resynthesized after cell stimulation is able to bind NF-kappa-B allowing its transport to the nucleus and protecting it to further NFKBIA-dependent inactivation. Association with inhibitor kappa B-interacting NKIRAS1 and NKIRAS2 prevent its phosphorylation rendering it more resistant to degradation, explaining its slower degradation.
Cellular Location	Cytoplasm. Nucleus.
Tissue Location	Expressed in all tissues examined.

Background

KLH-conjugated synthetic peptide encompassing a sequence within the N-term region of human IKB beta. The exact sequence is proprietary.

Images



Western blot analysis of IKB beta expression in mouse liver (A), rat liver (B) whole cell lysates.

Please note: All products are 'FOR RESEARCH USE ONLY. NOT FOR USE IN DIAGNOSTIC OR THERAPEUTIC PROCEDURES'.